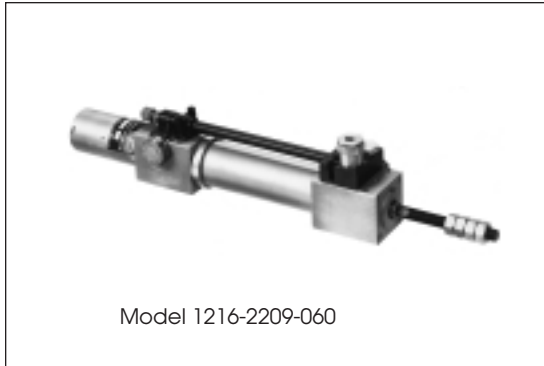




Series 12 Veritrol Hydraulic Checking Cylinder



Model 1216-2209-060

Application Information

- Provides uniformly controlled stroke speed essential to tool or work piece feeding on drilling, milling, cut-off and grinding. Smooths out stroke variations caused by compression of air under irregular loads.
- Can be connected to feed table or other driven machine part, or any arrangement where checking stroke opposes air-cylinder work stroke.
- Available in single or double acting models, providing up to 2,000 lbs. checking capacity in either or both directions.
- Dial set speed control permits cylinder travel from 3" to 300" per minute.
- Oil reservoir indicating stem gives visual refill cue.

Specifications

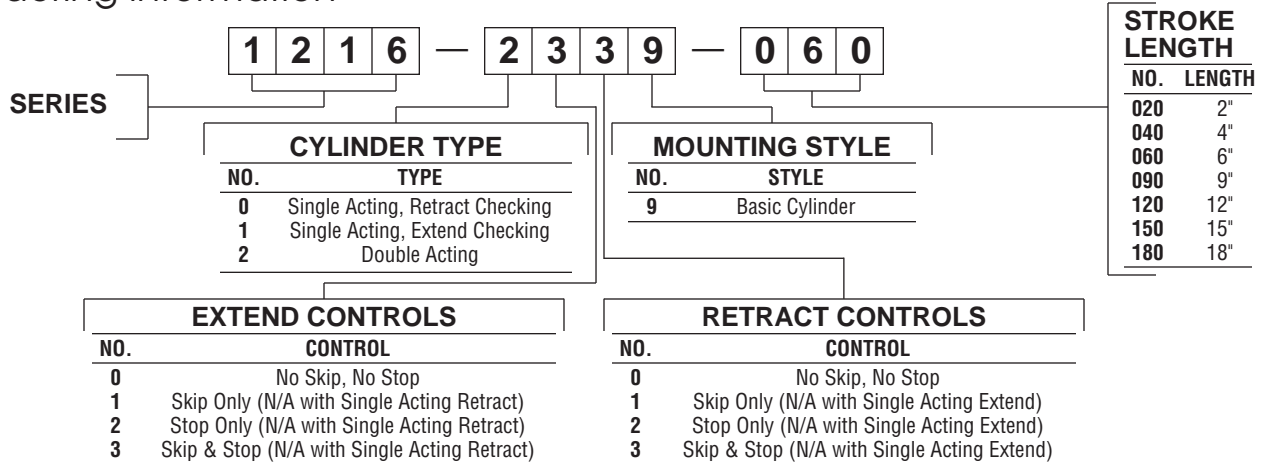
Operating Air Pressure: 60 p.s.i. minimum, 150 p.s.i. maximum.

Skip Control: Valve is normally open. To obtain speed control, skip valve must be actuated by applying a 60 p.s.i. minimum air pilot signal to the 1/8-27 NPTF port.

Stop Control: Valve is normally open. To stop piston rod movement, stop valve must be actuated by applying a 60 p.s.i. minimum air pilot signal to the 1/8-27 NPTF port.

NOTE: On cylinders equipped with skip & stop control valves, both skip & stop valves must be actuated to stop piston rod travel.

Ordering Information



ROD PROJECTION OPTION For additional Rod Projection specify total length of Rod Thread desired as an "E = _____" dimension after the Model No.

EXAMPLE: Where 6" additional Rod Thread is desired: 1216-1009-020, E = 9-3/8" (std. E of 3-3/8" + 6" = 9-3/8").

Model 1579 Hydraulic Oil Fill Kit



Recommended for use in filling oil reservoir in Series 12 cylinders.



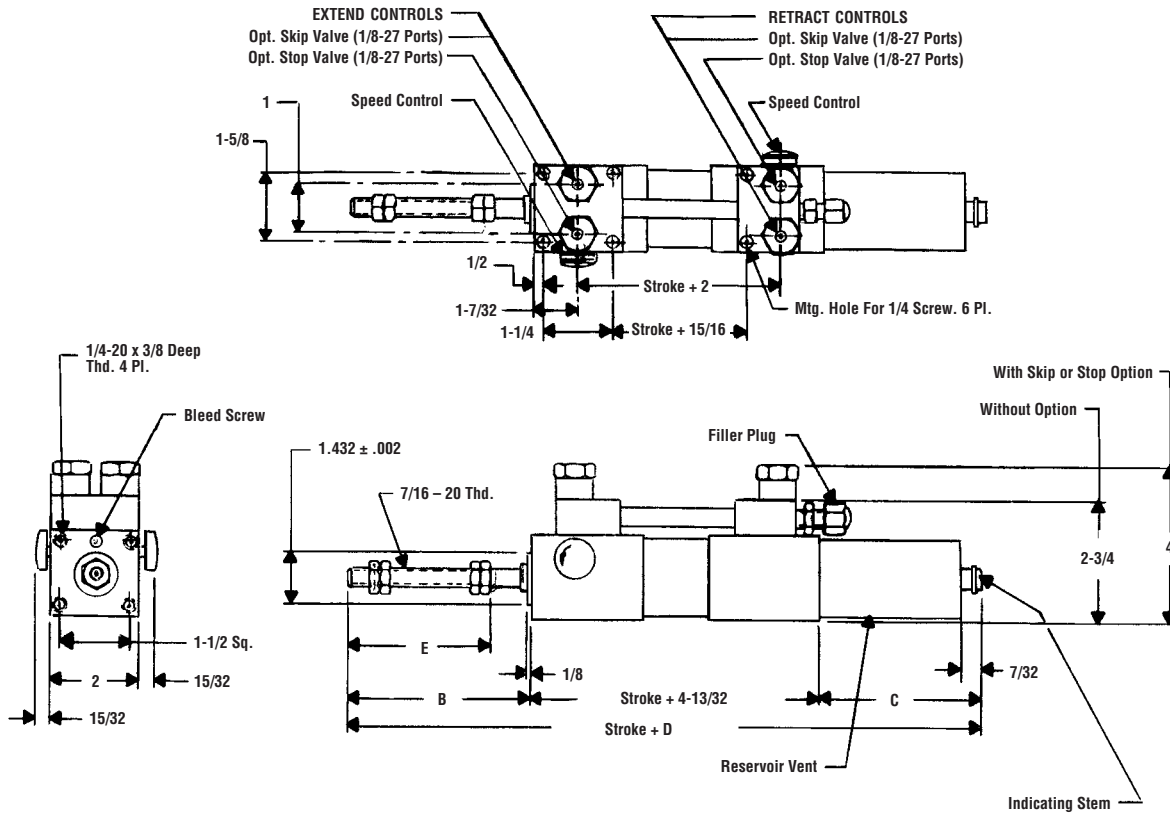
CONTROL LINE Hydraulic Oil

Recommended especially for use in Control Line Series 12 Veritrol hydraulic checking cylinders.

QUANTITY	PART NO.
1 Gallon	1626



Series 12 Veritrol Dimensional Information



Model 1216-2XX9-XXX (shown)
 Model 1216-1X09-XXX (same dimensions less retract controls)
 Model 1216-00X9-XXX (same dimensions less extended controls)

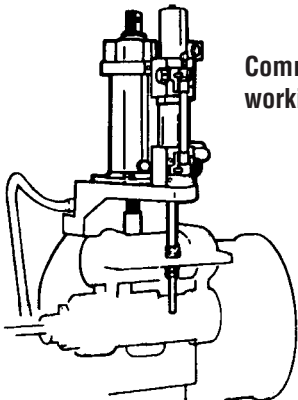
Repair Kit

SERIES 12	NO.
All Models	115808

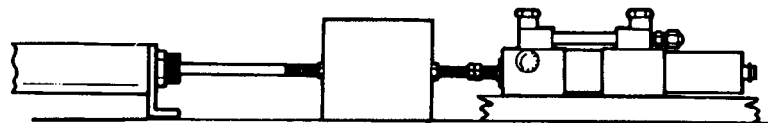
Dimensions

REF.	Stroke Length - Inches					
	2	4	6	9	12	15 - 18
B	4				4	
C	3-15/32				5-27/32	
D	Stroke + 11-7/8				Stroke + 14-1/4	
E	3-3/8				3-3/8	

Mounting Capabilities



Common front flange mount with checking cylinder working in tandem with air cylinder.



Flush mounted with checking cylinder opposing air cylinder.

CONTROL LINE EQUIPMENT, INC.

14750 Industrial Parkway • Cleveland, Ohio 44135
 (216) 433-7766 • FAX: (216) 433-7664