

NEW Composite Cylinders

A Lightweight, Corrosion Resistant Solution from Compact®

Overview

The Compact® Composite Cylinder is your complete solution for medical and food grade applications or where lightweight, washdown or corrosion resistance is required.

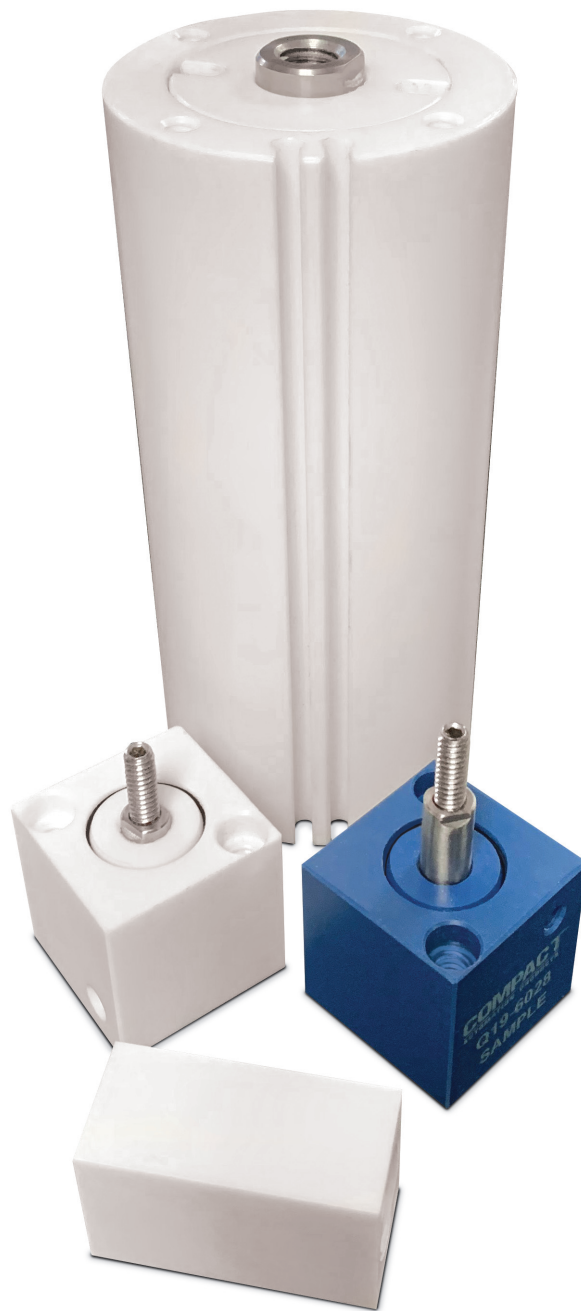
With a wide range of both imperial and metric sizes to choose from we can offer a completely configurable and repairable product to meet your motion control needs.

Experience the Compact Automation Difference!

Features and Benefits

- Inch series – 1/2", 3/4", 1-1/8", 1-3/8", 1-5/8" and 2" bore, round and square body styles with strokes lengths up to 4".
- Metric series – 8mm, 12mm, 20mm, 25mm and 40mm bore, rectangle style body with strokes up to 100mm
- 53% lighter than Aluminum and 84% lighter than Stainless Steel.
- 316 Stainless steel piston rods
- Magnetic pistons available
- Standard, Half-Husky and Full Husky duty types available
- Same envelope dimensions and mounting as the standard aluminum Inch and Metric series
- Operating pressure
 - 125 psi for 1/2", 3/4", 8mm, 12mm, 20mm bores
 - 150 psi for 1-1/8", 25mm bores and up
- Dow 33 lubricant
- Ethylene Propylene seals
- Hydex 4101 white and blue* body material
- Custom options available
- Fully repairable
- FDA approved materials

*Hydex Blue is food contact rated and detectable via vision, X-ray (2mm size) and metal detection (3mm size). Particle size detection may vary depending on the line speed, detection setting and food substrate.



Configure your cylinder on-line at www.compactautomation.com and sign-in to our Configurator. Configure your cylinder and click "CMP" for pricing, delivery and CAD models.

NEW Composite Cylinders

A Lightweight, Corrosion Resistant Solution from Compact®

Options	Description	Bore Sizes										
		Imperial						Metric				
		1/2"	3/4"	1-1/8"	1-3/8"	1-5/8"	2"	8mm	12mm	20mm	25mm	40mm
Mag	Magnetic Piston (A)	■	■	■	■	■	■	■	■	■	■	■
Mounting	Base, Side Mount (B)	■	■	■	■	■	■	■	■	■	■	■
	Round, End Mount (R)	■	■	■	■	■	■	■	■	■	■	■
	Square, End Mount (S)	■	■	■	■	■	■	■	■	■	■	■
	Thin, Side Mount (T)	■	■	■	■	■	■	■	■	■	■	■
Duty	Standard	■	■	■	■	■	■	■	■	■	■	■
	Intermediate - Half Husky (HH)	■	■	■	■	■	■	■	■	■	■	■
	Heavy - Full Husky (FH)	■	■	■	■	■	■	■	■	■	■	■
Rod Style	Single End	■	■	■	■	■	■	■	■	■	■	■
	Double End (D)	■	■	■	■	■	■	-	■	■	■	■
Stroke	Maximum stroke length	2"	4"	4"	4"	4"	4"	50mm	50mm	100mm	100mm	100mm
Rod Wiper	Rod Wiper, Single End (RW)	■	■	■	■	■	■	-	-	-	-	-
	Rod Wiper, Double End (RWD)	■	■	■	■	■	■	-	-	-	-	-
Mounting Options	Threads Rear (TR)	■	■	■	■	■	■	■	■	■	■	■
	Threads Both Ends (TBE)	■	■	■	■	■	■	■	■	■	■	■
	Through Mount (TM)	■	■	■	■	■	■	-	■	■	■	■
	Through Mount, Front C'Bore (TMF)	■	-	-	-	-	-	-	-	-	-	-
	Through Mount, Rear C'Bore (TMR)	■	-	-	-	-	-	-	-	-	-	-
Rod Extension	Rod Extension - Single End (EX)	■	■	■	■	■	■	■	■	■	■	■
	Rod Extension - Double (EXD)	■	■	■	■	■	■	-	■	■	■	■
	Rod Extension - Front (EXF)	■	■	■	■	■	■	-	■	■	■	■
	Rod Extension - Rear (EXR)	■	■	■	■	■	■	-	■	■	■	■
Rod End	Clevis Bracket w/Set Screw (CBSS)*	■	■	■	■	■	■	-	-	-	-	-
	Male Stud (MS)*	■	■	■	■	■	■	-	■	■	■	■
	Male Stud, Double End (MSD)*	■	■	■	■	■	■	-	■	■	■	■
	Fine Thread (FT)	■	■	■	■	■	■	-	-	-	-	-
	Fine Thread Male Stud (FTMS)*	■	■	■	■	■	■	-	-	-	-	-
	Fine Thread Male Stud, Double (FTMSD)*	■	■	■	■	■	■	-	-	-	-	-
	Rod Eye (RE)*	■	■	■	■	■	■	-	■	■	■	■
	Rod Eye - Short (RES)*	-	■	-	-	-	-	-	-	-	-	-
RA	Reverse Assemble (RA)	■	■	■	■	■	■	■	■	■	■	■
	Ports Inline (YPORTS)	■	■	■	■	■	■	■	■	■	■	■
Seals	Ethylene Polypropylene (ETP)	■	■	■	■	■	■	■	■	■	■	■

*Material is Carbon Steel. Other material options available, please contact customer service for ordering options.