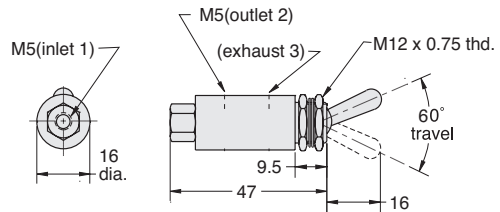


Normally-Closed Poppet Valves



(M-MTV-3 shown)

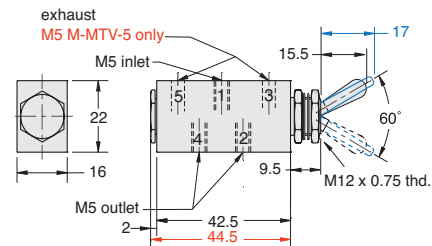


Port(s)	Toggle	2/2	3/2
M5	ENP Steel	M-MTV-2	M-MTV-3
R1/8	ENP Steel	M-MTV-2P	M-MTV-3P

Normally-Open Spool Valves



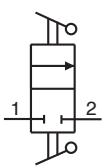
(M-MTV-4F shown)



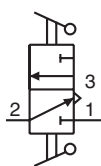
Port(s)	Toggle	Exhaust	5/2
M5	ENP Steel	To Atmosphere	M-MTV-4
M5	Plastic	To Atmosphere	M-MTV-4F
M5	ENP Steel	M5	M-MTV-5
M5	Plastic	M5	M-MTV-5F



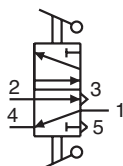
For high temperature applications (up to +200°C), or those that require special seals for chemical compatibility, Clippard offers optional FKM seals.



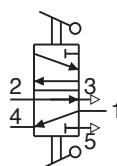
M-MTV-2



M-MTV-3



M-MTV-4
M-MTV-4F



M-MTV-5
M-MTV-5F