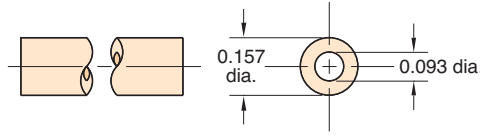




# HOSE & TUBING

## 5/32" O.D. 95A Polyurethane Tubing

Flexible, durable ether based tubing



**Part No.**

URT1-0503-□-□

**Note:**

Specify color on order, and use full product number (including code letters for color) as shown in Price List. If no color is specified, clear will be furnished.

**Working Range:** 0 to 105 psig at 100°F Maximum 120°F

**Static Burst Pressure:** Over 500 psig at 70°F

**Color:** Solid: Black, gray, orange, red, white  
Translucent: Blue, clear, green, red, yellow

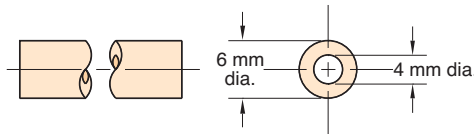
**Lengths Available:** 50' and 500'

**Bend Radius:** 3/8"

**Note:** Designed for use with push-in fittings.

## 6 mm O.D. 95A Polyurethane Tubing

Flexible, durable ether based tubing



**Part No.**

URT1-0604M-□-□

**Note:**

Specify color on order, and use full product number (including code letters for color) as shown in Price List. If no color is specified, clear will be furnished.

**Working Range:** 0 to 105 psig at 100°F Maximum 120°F

**Static Burst Pressure:** Over 450 psig at 70°F

**Color:** Solid: Black  
Translucent: Blue, clear, green, red

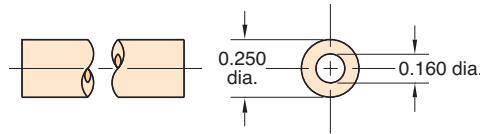
**Lengths Available:** 50' and 500'

**Bend Radius:** 1/2"

**Note:** Designed for use with push-in fittings.

## 1/4" O.D. 95A Polyurethane Tubing

Flexible, durable ether based tubing



**Part No.**

URT1-0805-□-□

**Note:**

Specify color on order, and use full product number (including code letters for color) as shown in Price List. If no color is specified, clear will be furnished.

**Working Range:** 0 to 105 psig at 100°F Maximum 120°F

**Static Burst Pressure:** Over 450 psig at 70°F

**Color:** Solid: Black, gray, orange, red, white  
Translucent: Blue, clear, green, red, yellow

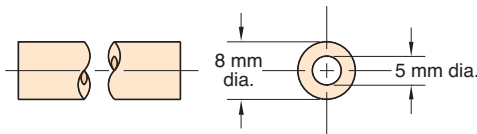
**Lengths Available:** 50' and 500'

**Bend Radius:** 1/2"

**Note:** Designed for use with push-in fittings.

## 8 mm O.D. 95A Polyurethane Tubing

Flexible, durable ether based tubing



**Part No.**

URT1-0805M-CLT-□

**Working Range:** 0 to 105 psig at 100°F Maximum 120°F

**Static Burst Pressure:** Over 465 psig at 75°F

**Color:** Clear

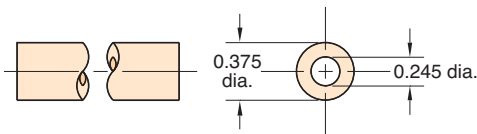
**Lengths Available:** 50' and 500'

**Bend Radius:** 3/4"

**Note:** Designed for use with push-in fittings.

## 3/8" O.D. 95A Polyurethane Tubing

Flexible, durable ether based tubing



**Part No.**

URT1-1208-□-□

**Note:**

Specify color on order, and use full product number (including code letters for color) as shown in Price List. If no color is specified, clear will be furnished.

**Working Range:** 0 to 105 psig at 100°F Maximum 120°F

**Static Burst Pressure:** Over 440 psig at 75°F

**Color:** Solid: Black  
Translucent: Blue, clear, green, red

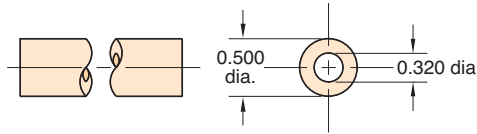
**Lengths Available:** 50' and 500'

**Bend Radius:** 7/8"

**Note:** Designed for use with push-in fittings.

## 1/2" O.D. 95A Polyurethane Tubing

Flexible, durable ether based tubing



**Part No.**

URT1-1610-CLT-□

**Working Range:** 0 to 105 psig at 100°F Maximum 120°F

**Static Burst Pressure:** Over 420 psig at 75°F

**Color:** Clear

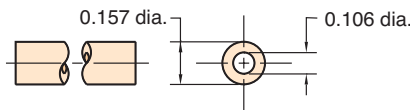
**Lengths Available:** 50' and 250'

**Bend Radius:** 1 1/8"

**Note:** Designed for use with push-in fittings.

## 5/32" O.D. 50D Polyethylene Tubing

Linear low density tubing



**Part No.**

PET1-0503-□-□

**Note:**

Specify color on order, and use full product number (including code letters for color) as shown in Price List. If no color is specified, natural will be furnished.

**Working Range:** 0 to 105 psig at 100°F Maximum 120°F

**Static Burst Pressure:** Over 540 psig at 75°F

**Colors:** Solid: Black or Natural

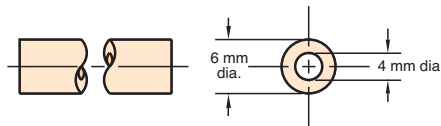
**Lengths Available:** 50' and 500'

**Bend Radius:** 1/2"

**Note:** Designed for use with push-in fittings.

## 6 mm O.D. 50D Polyethylene Tubing

Linear low density tubing



**Part No.**

PET1-0604M-□-□

**Note:**

Specify color on order, and use full product number (including code letters for color) as shown in Price List. If no color is specified, natural will be furnished.

**Working Range:** 0 to 105 psig at 100°F Maximum 120°F

**Static Burst Pressure:** Approximately 560 psig at 75°F

**Colors:** Solid: Black or Natural

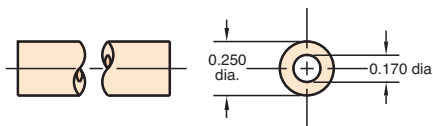
**Lengths Available:** 50' and 500'

**Bend Radius:** 1 1/4"

**Note:** Designed for use with push-in fittings.

## 1/4" O.D. 50D Polyethylene Tubing

Linear low density tubing



**Part No.**

PET1-0805-□-□

**Note:**

Specify color on order, and use full product number (including code letters for color) as shown in Price List. If no color is specified, natural will be furnished.

**Working Range:** 0 to 105 psig at 100°F Maximum 120°F

**Static Burst Pressure:** Approximately 480 psig at 75°F

**Colors:** Solid: Black or Natural

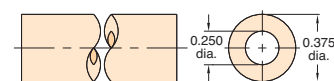
**Lengths Available:** 50' and 500'

**Bend Radius:** 1 1/4"

**Note:** Designed for use with push-in fittings.

## 3/8" O.D. 50D Polyethylene Tubing

Linear low density tubing



**Part No.**

PET1-1208-□-□

**Note:**

Specify color on order, and use full product number (including code letters for color) as shown in Price List. If no color is specified, natural will be furnished.

**Working Range:** 0 to 105 psig at 100°F Maximum 120°F

**Static Burst Pressure:** Approximately 600 psig at 75°F

**Colors:** Solid: Black or Natural

**Lengths Available:** 50' and 500'

**Bend Radius:** 2"

**Note:** Designed for use with push-in fittings.