

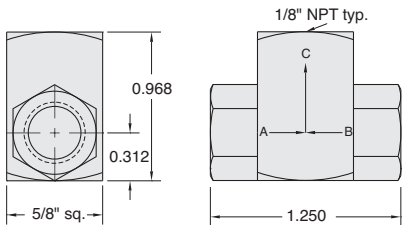


SHUTTLE VALVES

Poppet Type Shuttle Valves



Brass body, Delrin Poppet,
Nitrile seal



Medium: Air, Water or Oil

Input Pressure: 300 psig - air; 1,000 psig - hydraulic

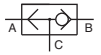
Air Flow: 14 scfm @ 50 psig; 26 scfm @ 100 psig

Mounting: Direct or in-line

Operation: Flow from "A" to "C" or "B" to "C"

Pressure to Shift: 1/2 psig approx.

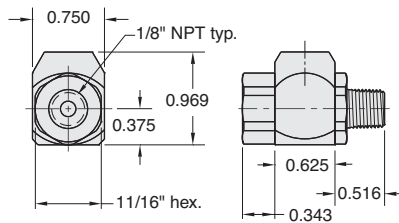
Note: Shuttle valves should not be used as a pressure selector



Part No. Description

MISV-1 Poppet Shuttle Valve, 1/8" NPT

J-Series Shuttle Valves



Part No.
ISV-2PFE

Poppet type shuttle
(double check) valve.
Brass body, stainless
steel shuttle, Nitrile
seal

Medium: Air, Water or Oil

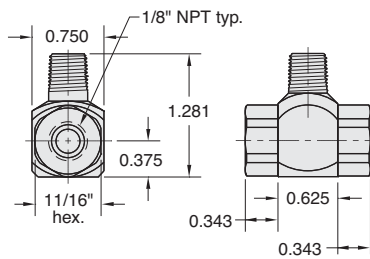
Input Pressure: 300 psig max.

Air Flow: 30 scfm @ 50 psig
50 scfm @ 100 psig

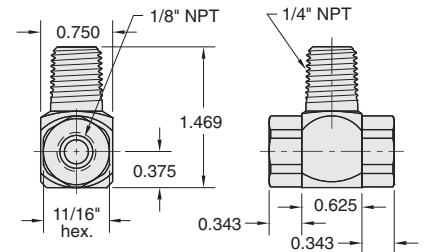
Mounting: Direct or in-line

Pressure to Shift: 1 psig approx.

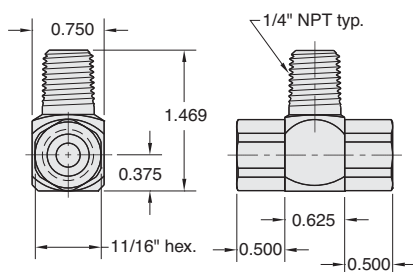
Note: Shuttle valves should not be used as a pressure selector



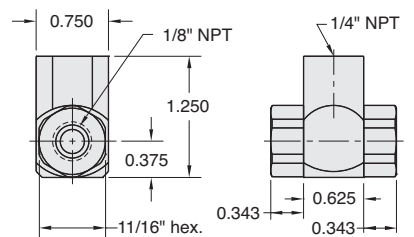
Part No.
ISV-2PFF



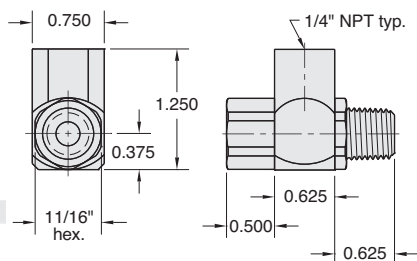
Part No.
ISV-2WFF



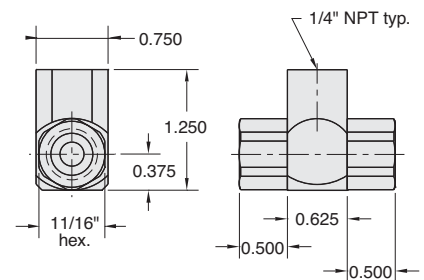
Part No.
ISV-2WYY



Part No.
ISV-2YFF



Part No.
ISV-2YWY



Part No.
ISV-2YY