



BOWL OPTIONS



Polycarbonate



Polycarbonate with Bowl Shield



Metal with Site Glass (-M)

Filter Drain Options



Manual



Manual



Semi-Auto



Series 1 & 2



Automatic (-D)
Series 3, 4 & 5

Filter Replacement Bowls

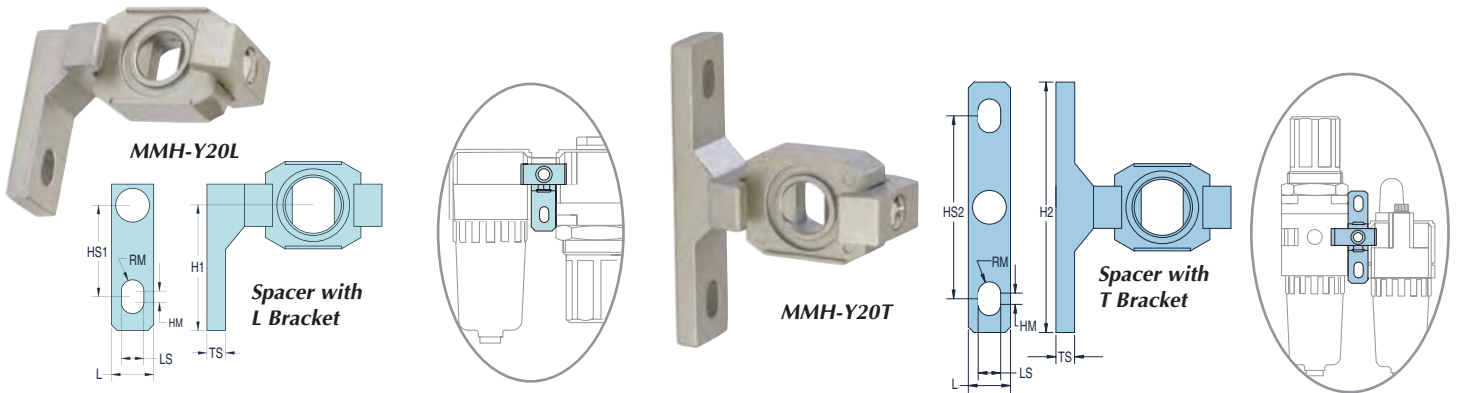
	Manual Drain	Semi-Auto Drain	Automatic Drain
Polycarbonate Bowl			
MMF-1 Series	27055-1	-	-
MMF-2 Series	27055-2	-	27055-2-A
MMF-3 Series	-	27055-3	-
MMF-4/5 Series	-	27055-4	-
Metal Bowl Shield			
MMF-3 Series	-	27070-3	27070-3A
MMF-4/5 Series	-	27070-4	-
Metal Bowl with Site Glass			
MMF-2 Series	27059-2	-	27059-2-A
MMF-3 Series	-	27059-3	27059-3-A
MMF-4/5 Series	-	27059-4	27059-4-A

Lubricator Replacement Bowls

	Polycarbonate	Bowl Shield	Metal Bowl*
MML-1 Series	27057-1	-	-
MML-2 Series	27057-2	-	27060-2
MML-3 Series	27057-3	27070-3	27060-3
MML-4/5 Series	27057-4	27070-4	27060-4

* All metal bowls come complete with a sight glass.





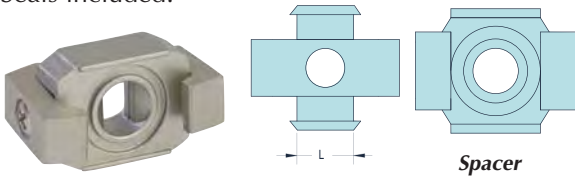
Mounting Hardware for Combination Units

To convert individual Filter, Regulator and Lubricators into combination units. Seals included.

FRL Series	Spacer with L Bracket	Spacer with T Bracket	Dim.	MMH-Y10L	MMH-Y20L	MMH-Y30L	MMH-Y40L	MMH-Y50L	MMH-Y60L
				MMH-Y10T	MMH-Y20T	MMH-Y30T	MMH-Y40T	MMH-Y50T	MMH-Y60T
FRL-1	MMH-Y10L	MMH-Y10T	H1	1.06	1.30	1.77	1.97	1.97	2.48
FRL-2	MMH-Y20L	MMH-Y20T	H2	2.13	2.60	3.54	3.94	3.94	4.96
FRL-3	MMH-Y30L	MMH-Y30T	L	0.47	0.59	0.63	0.87	0.87	0.91
FRL-4W/4Z	MMH-Y40L	MMH-Y40T	LS	0.18	0.22	0.28	0.35	0.35	0.47
FRL-4A	MMH-Y50L	MMH-Y50T	HM	0.12	0.12	0.16	0.16	0.16	0.16
FRL-5	MMH-Y60L	MMH-Y60T	TS	0.20	0.20	0.28	0.28	0.28	0.41
			RM	0.09	0.11	0.14	0.18	0.18	0.24
			HS1	0.79	0.94	1.38	1.57	1.57	1.97
			HS2	1.57	1.89	2.76	3.15	3.15	3.94

Spacers

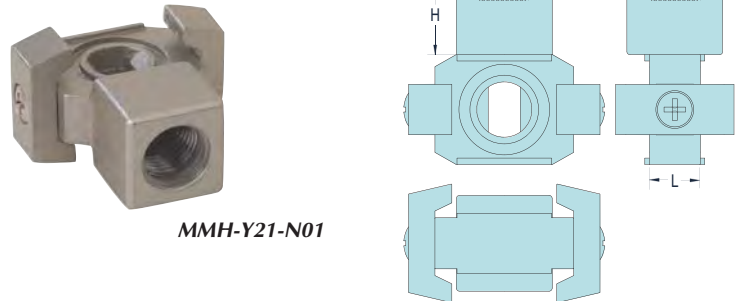
To convert individual Filter, Regulator and Lubricators into combination units without mounting brackets. Seals included.



Series	Part No.	"L" Dimension
FRL-1	MMH-Y10	0.32
FRL-2	MMH-Y20	0.41
FRL-3	MMH-Y30	0.44
FRL-4W/4Z	MMH-Y40	0.55
FRL-4A	MMH-Y50	0.57
FRL-5	MMH-Y60	0.61

Spacers with Auxiliary Port

Provides parallel port between components.



FRL Series	Spacer with Port	Spacer with L Bracket & Port	Spacer with T Bracket & Port	Dimension		
				L	H	W
FRL-2	MMH-Y21-N01 (1/8")	MMH-Y21L-N01 (1/8")	MMH-Y21T-N01 (1/8")	0.41	0.69	0.76
	MMH-Y21-N02 (1/4")	MMH-Y21L-N02 (1/4")	MMH-Y21T-N02 (1/4")	0.41	0.69	0.76
FRL-3	MMH-Y31-N01 (1/8")	MMH-Y31L-N01 (1/8")	MMH-Y31T-N01 (1/8")	0.44	0.64	0.75
	MMH-Y31-N02 (1/4")	MMH-Y31L-N02 (1/4")	MMH-Y31T-N02 (1/4")	0.44	0.64	0.75
FRL-4W/4Z	MMH-Y41-N02 (1/4")	MMH-Y41L-N02 (1/4")	MMH-Y41T-N02 (1/4")	0.55	0.71	0.94
	MMH-Y41-N03 (3/8")	MMH-Y41L-N03 (3/8")	MMH-Y41T-N03 (3/8")	0.55	0.71	0.94
FRL-5	MMH-Y61-N03 (3/8")	MMH-Y61L-N03 (3/8")	MMH-Y61T-N03 (3/8")	0.61	0.79	1.18
	MMH-Y61-N04 (1/2")	MMH-Y61L-N04 (1/2")	MMH-Y61T-N04 (1/2")	0.61	0.79	1.18

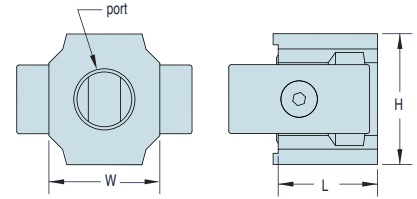


MAXIMATIC® MOUNTING HARDWARE & ACCESSORIES



NEW! Spacers with Quick Exhaust

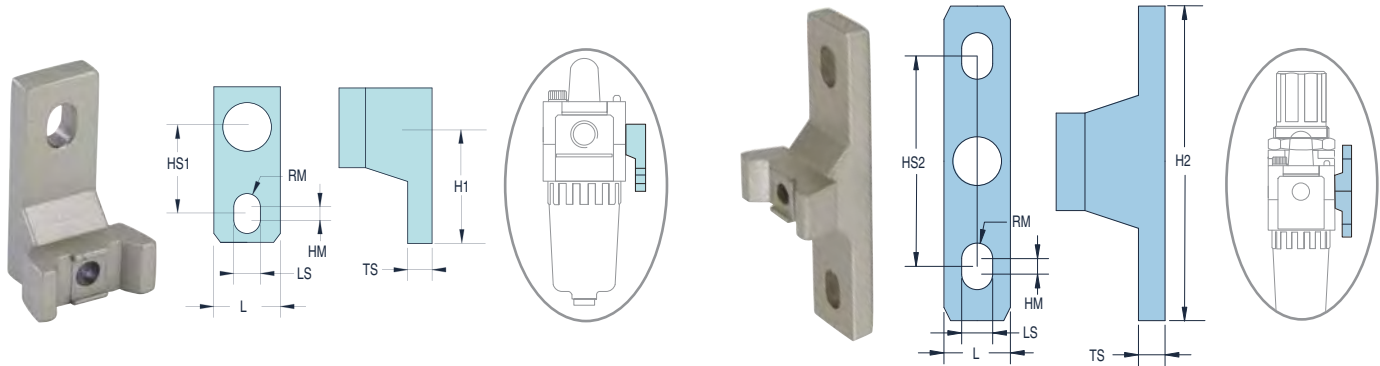
Threaded pipe adapters allow for a component to be quickly and easily removed from the airline for replacement or service. Adapters can be used to allow for different pipe diameters in the configuration.



FRL Series	Part No.	Port Size	L	Dimension	
				W	H
FRL-2	MMH-PA-2P	1/8" NPT	0.91	0.87	0.87
FRL-2	MMH-PA-2Q	1/4" NPT	0.91	0.87	0.87
FRL-2	MMH-PA-2W	3/8" NPT	0.91	0.87	0.87
FRL-3	MMH-PA-3Q	1/4" NPT	1.02	1.34	1.14
FRL-3	MMH-PA-3W	3/8" NPT	1.02	1.34	1.14
FRL-3	MMH-PA-3Z	1/2" NPT	1.02	1.34	1.14
FRL-4W/4Z	MMH-PA-4W	3/8" NPT	1.30	1.65	1.38
FRL-4W/4Z	MMH-PA-4Z	1/2" NPT	1.30	1.65	1.38
FRL-5	MMH-PA-5A	3/4" NPT	1.58	2.13	2.17
FRL-5	MMH-PA-5B	1" NPT	1.58	2.13	2.17

T & L Brackets

L brackets are included with the purchase of combination FRLs, to convert to T, use T bracket only. If no bracket is furnished, use T or L bracket with MMH-YXX spacer (ordered separately).



FRL Series	L Bracket Part No.	FRL Series	L Bracket Part No.
FRL-1	MMH-B110L	4W/4Z	MMH-B410L
FRL-2	MMH-B210L	4A	MMH-B510L
FRL-3	MMH-B310L	5	MMH-B610L

FRL Series	T Bracket Part No.	FRL Series	T Bracket Part No.
FRL-1	MMH-B110T	FRL-4W/4Z	MMH-B410T
FRL-2	MMH-B210T	FRL-4A	MMH-B510T
FRL-3	MMH-B310T	FRL-5	MMH-B610T

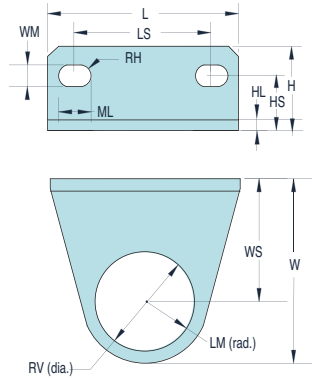
Dim.	MMH-B110T MMH-B110L	MMH-B210T MMH-B210L	MMH-B310T MMH-B310L	MMH-B410T MMH-B410L	MMH-B510T MMH-B510L	MMH-B610T MMH-B610L
H1	1.06	1.30	1.77	1.97	1.97	2.48
H2	2.13	2.60	3.54	3.94	3.94	4.96
L	0.47	0.59	0.63	0.87	0.87	0.91
LS	0.18	0.22	0.28	0.35	0.35	0.47
HM	0.12	0.12	0.16	0.16	0.16	0.16
TS	0.20	0.20	0.28	0.28	0.28	0.41
RM	0.09	0.11	0.14	0.18	0.18	0.24
HS1	0.79	0.94	1.38	1.57	1.57	1.97
HS2	1.57	1.89	2.76	3.15	3.15	3.94



Replacement Mounting Hardware for Regulators & Stacked Filter-Regulators

Brackets are included with the purchase of these components. Mounting screws not provided.

Regulator	Bracket Part No.
MMR-1N/MMFRS-1N	MMH-B120
MMR-2P/2Q	MMH-B220
MMFRS-2P/2Q	MMH-B220
MMR-3Q/3W	MMH-B320
MMFRS-3Q/3W	MMH-B320
MMR-4W/4Z/4A	MMH-B420
MMFRS-4W/4Z/4A	MMH-B420
MMR-5B	MMH-B420
MMFRS-5B	MMH-B420



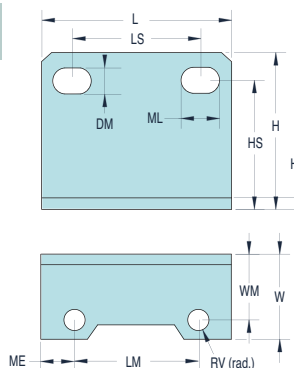
Dim.	MMH-B120	MMH-B220	MMH-B320	MMH-B420
L	1.57	2.17	2.09	2.76
LS	1.10	1.34	1.57	2.13
H	0.67	1.05	0.93	1.15
HS	0.43	0.75	0.55	0.71
W	1.49	1.97	2.52	3.12
WS	0.98	1.18	1.55	1.94
RV	0.81	1.32	1.67	2.07
LM	0.48	0.79	0.98	1.18
ML	0.26	0.60	0.31	0.41
WM	0.18	0.21	0.26	0.33
RH	0.09	0.11	0.13	0.17
HL	0.08	0.08	0.08	0.08



Mounting Hardware for Lubricators & Filters

No brackets are furnished with Lubricators or Filters. Comes with two screws to mount bracket to MMF/MMML.

Filter/ Lubricator	Bkt. Mtg. Thread	Bracket Part No.
MMF-2P	M4	MMH-B240
MML-2P	M4	MMH-B240
MMF-3	M4	MMH-B340
MML-3	M4	MMH-B340
MMF-4Z/4W	M5	MMH-B440
MML-4Z/4W	M5	MMH-B440
MMF-4A	M5	MMH-B540
MML-4A	M5	MMH-B540
MMF-5	M6	MMH-B640
MML-5	M6	MMH-B640

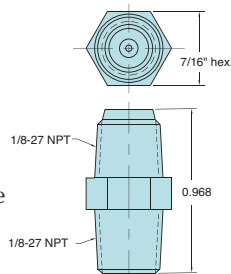


Dim.	MMH-B240	MMH-B340	MMH-B440	MMH-B540	MMH-B640
L	1.58	2.09	2.76	2.76	3.54
LS	1.06	1.59	2.12	2.13	2.60
DM	0.21	0.26	0.34	0.34	0.43
H	1.18	1.51	1.85	1.89	2.50
HS	0.95	1.24	1.49	1.53	2.03
W	0.74	0.95	1.22	1.24	1.69
RV	0.18	0.17	0.22	0.22	0.26
LM	1.03	1.39	1.85	1.79	2.37
ME	0.27	0.35	0.45	0.48	0.59
ML	0.33	0.32	0.41	0.41	5.12
WM	0.56	0.77	0.77	0.79	0.43
HL	0.08	0.08	0.87	0.09	0.13

1/8" NPT Filter



1/8" NPT hex nipple with 40 micron filter / strainer, can be used as a muffler.

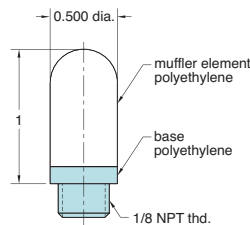


Part No.	Description
9002-01	1/8" NPT Filter

Muffler



The 3849-1 muffler is constructed of durable polyethylene with a 1/8" NPT male thread.



Part No.	Description
3849-1	Muffler

Filter Elements

All Maximatic filters come standard with a 25 micron sintered brass filter element and baffle, however 5 micron filters are also available. Add "-F5" to the end of the filter Part Number for 5 micron. Replacement filters with baffles are also offered below.

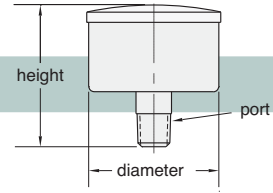
Filter Series	5 micron	25 micron
MMF-1	27021	27050
MMF-2	27022	27051
MMF-3	27023	27052
MMF-4	27024	27053
MMF-5	27025	27054



Gauge measures pneumatic system pressure. Stud mounted.



Pressure Gauges



Range: Scale reading up to 160 psig. See chart.

Construction: Steel case (nickel-plated on PG-101-NP). Plastic face. Dial shows two ranges; psig in black, bars in red. Built-in pressure snubber.

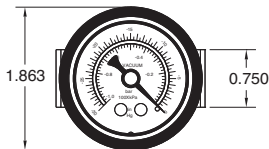
Ports: Connection located at rear is double threaded O.D. - male thread 1/8" NPT

Mounting: Stud mount using 1/8" NPT center stud

Part No.	Diameter	Height	Port (OD)	Range	
				psig	Bar
PG-10-30J*	1"	1.003"	1/16" NPT	0 to 30	0 to 2
PG-10-60J*	1"	1.003"	1/16" NPT	0 to 60	0 to 4
PG-10-160J*	1"	1.003"	1/16" NPT	0 to 160	0 to 11
PG-15-30P	1.5"	1.540"	1/8" NPT	0 to 30	0 to 2
PG-15-60P	1.5"	1.540"	1/8" NPT	0 to 60	0 to 4
PG-101-BK*	1.625"	1.670"	1/8" NPT	0 to 100	0 to 6.9
PG-101-NP*	1.625"	1.670"	1/8" NPT	0 to 100	0 to 6.9
PG-15-160P	1.5"	1.540"	1/8" NPT	0 to 160	0 to 11
PG-20-30Q	2"	1.680"	1/4" NPT	0 to 30	0 to 2
PG-20-60Q	2"	1.680"	1/4" NPT	0 to 60	0 to 4
PG-20-160Q	2"	1.680"	1/4" NPT	0 to 160	0 to 11

* I.D. - tapped for #10-32 fitting

Vacuum Gauge



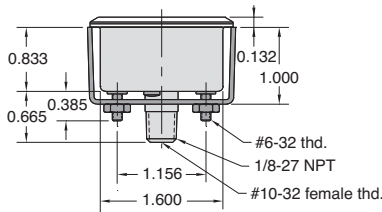
Gauge measures pneumatic vacuum pressure. Mounting bracket included.

Range: Scale reading from 0 to 30 in.Hg. and 0 to -1 bar

Construction: Nickel-plated steel case. Plastic face. Dial shows two ranges; Hg in black, bars in red. Built-in pressure snubber.

Ports: Connection located at rear is double threaded O.D. - male thread 1/8" NPT I.D. - tapped for #10-32 fitting

Mounting: Stud mount using 1/8" NPT center stud or panel mount using the zinc plated steel bracket supplied.



Pressure Gauge



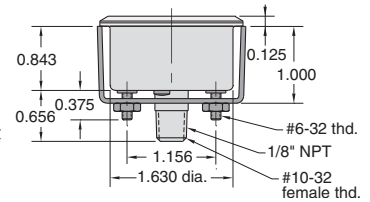
Gauge measures pneumatic system pressure. Mounting bracket included.

Input Pressure: Scale reading from 0 to 100 psig and 0 to 6.9 bar

Construction: Nickel-plated steel case. Plastic face. Dial shows two ranges; psig in black, bars in red. Built-in pressure snubber.

Ports: Connection located at rear is double threaded O.D. - male thread 1/8" NPT I.D. - tapped for #10-32 fitting

Mounting: With zinc plated steel bracket supplied



Part No.	Description
VG-30	Vacuum Gauge

Part No.	Description
PG-100	Pressure Gauge