

GAUGES, AIR CHOKES, VOLUME CHAMBERS & MUFFLERS

VACUUM GAUGE

Gauge measures pneumatic vacuum pressure; mounting bracket included.



Range	Scale reading from 0 to 30" Hg and 0 to -1 bar
Construction	Nickel-plated steel case. Dial shows two ranges: Hg (black) and bar (red). Built-in pressure snubber.
Ports	Double threaded: O.D. male thread 1/8" NPT, I.D. tapped for #10-32 fitting

Part No.	Description
VG-30	Vacuum Gauge

PRESSURE GAUGE

Gauge measures pneumatic system pressure; stud mounted.



Range	Scale reading from 0 to 100 psig and 0 to 6.9 bar
Construction	Steel case. Dial shows two ranges: psig (black) and bar (red). Built-in pressure snubber.
Ports	Double threaded: O.D. male thread 1/8" NPT, I.D. tapped for #10-32 fitting

Part No.	Description
PG-101-BK	Pressure Gauge, Black Case
PG-101-NP	Pressure Gauge, Nickel-Plated

PRESSURE GAUGE

Gauge measures pneumatic system pressure; mounting bracket included.

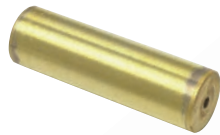


Range	Scale reading from 0 to 100 psig and 0 to 6.9 bar
Construction	Steel case. Dial shows two ranges: psig (black) and bar (red). Built-in pressure snubber.
Ports	Double threaded: O.D. male thread 1/8" NPT, I.D. tapped for #10-32 fitting

Part No.	Description
PG-100	Pressure Gauge

IN-LINE VOLUME CHAMBER

Used for providing a time delay in pneumatic circuits.



Medium: Air
Material: Brass
Input Pressure: 150 psig
Mounting: Direct or in-line; mounting clamp with MAT-2.0 and MAT-4.0

The time delay of the PV-1, PV-1P and R-711 may be increased by adding standard Clippard volume chambers. The charts below show total time vs. volume for these combinations.

Volume CU. IN.	Volume Chamber	Time in Seconds		
		Volume	PV-1	R-711
0.1	MAT-.1	0	0.042	0.117
0.25	MAT-.25	0.1	0.074	0.180
0.50	MAT-.50	0.25	0.124	0.245
1.0	MAT-1.0	0.5	0.210	0.350
1.2	R-821	1.0	0.390	0.450
2.0	MAT-2.0	1.2	0.580	0.700
2.4	R-821 (2)	2.0	0.760	1.000
3.6	R-821 (3)	2.4	0.950	1.300
4.0	MAT-4.0	3.6	1.200	1.900
		4.0	1.500	N.R.

Part No.	Description
MAT-(size)	In-Line Volume Chamber, #10-32

Specify size per chart

IN-LINE FIXED ORIFICE AIR CHOKES

Each choke is calibrated for precise flow



Medium: Air
Material: Brass
Working Range: 0 to 300 psig max.

Part No.	Description
MAC-A	Air Choke, 0.0135" Hole
MAC-B	Air Choke, 0.010" Hole
MAC-C	Air Choke, 0.0075" Hole
MAC-D	Air Choke, 0.006" Hole

SPEED CONTROL MUFFLERS

Speed control mufflers provide a variation of metering air flow at an acceptable sound level on valve exhaust ports. Knurled knob length based on minimum thread engagement. Solid brass body, sintered bronze muffler (40 micron).

Part No.	Thread
SCM-P	1/8-27 NPT
SCM-Q	1/4-18 NPT
SCM-W	3/8-18 NPT
SCM-Z	1/2-14 NPT

