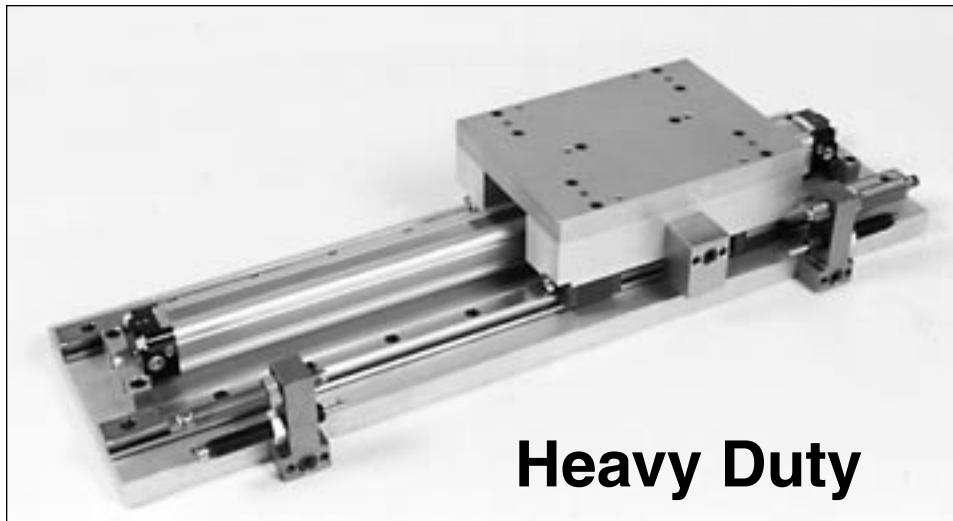
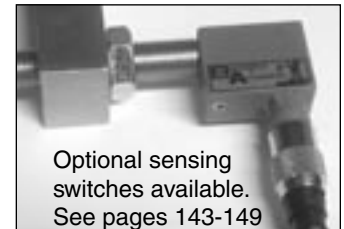


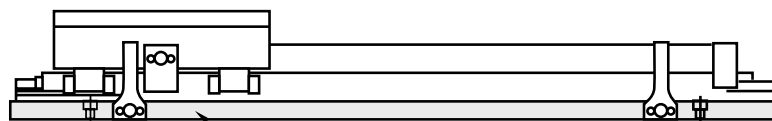
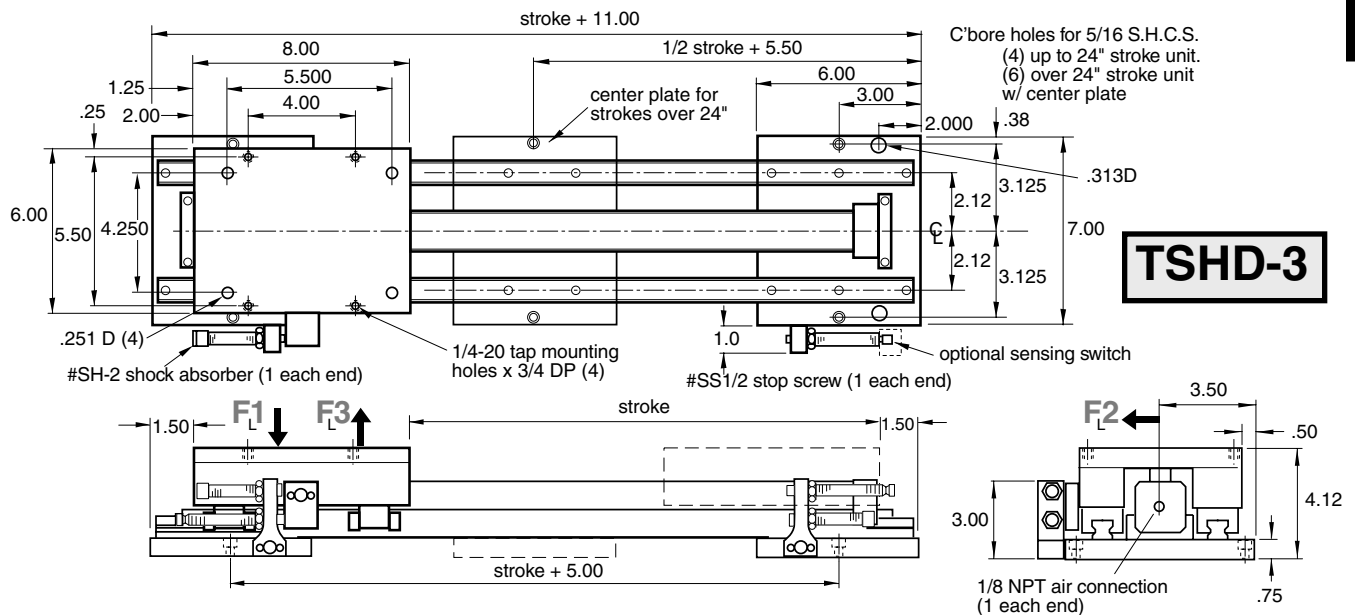
# TSHD-3 Table Slide



## Heavy Duty



Optional sensing switches available.  
See pages 143-149



Continuous reinforced mounting plate  
(4 mtg holes up to 24" stroke - 6 mtg holes over 24" stroke)

**TSHD-R-3**

### Order:

**TSHD-3-(stroke)**

**TSHD-R-3-(stroke) (reinforced)**

Bore = 1"

Force at 80 psi: 48 lbs

F<sub>L1</sub> = 180 (320 reinforced)

F<sub>L2</sub> = .75 x F<sub>L1</sub>

F<sub>L3</sub> = .50 x F<sub>L1</sub>

Approx. Weight = 16 lbs + .5 x (stroke) = lbs

Available strokes up to 96" in 1" increments

### Technical data

- Stroke designed with built in stopscrews with fine threads
- The stopscrews can be used with sensing switches
- Designed for production rates and long life
- Seal kits and rebuilt kits available.

Operating medium  
Operating pressure  
Repeat accuracy  
Air connection

Compressed air  
60-100 psi  
±0.0005 in  
1/8 NPT