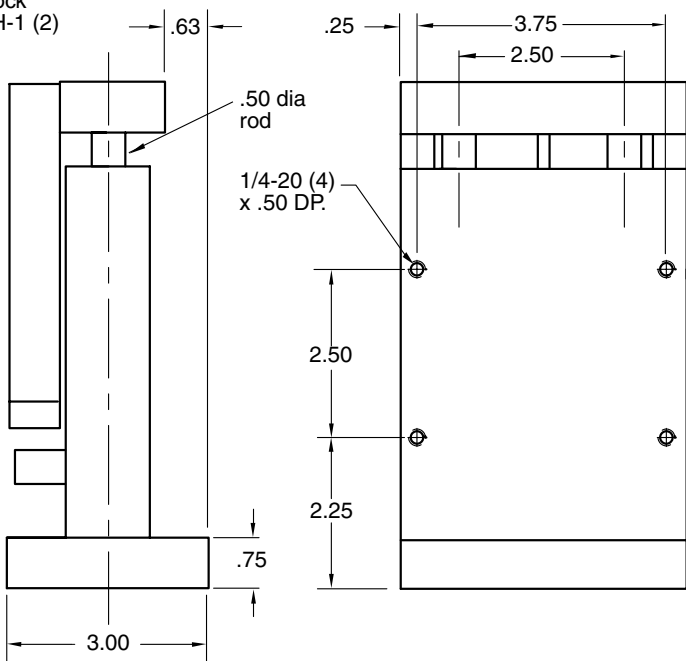
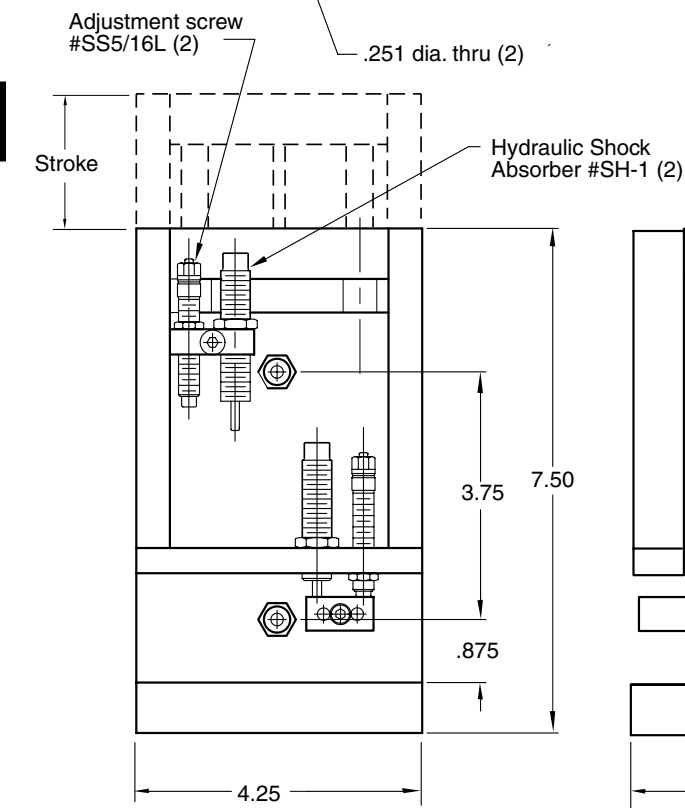
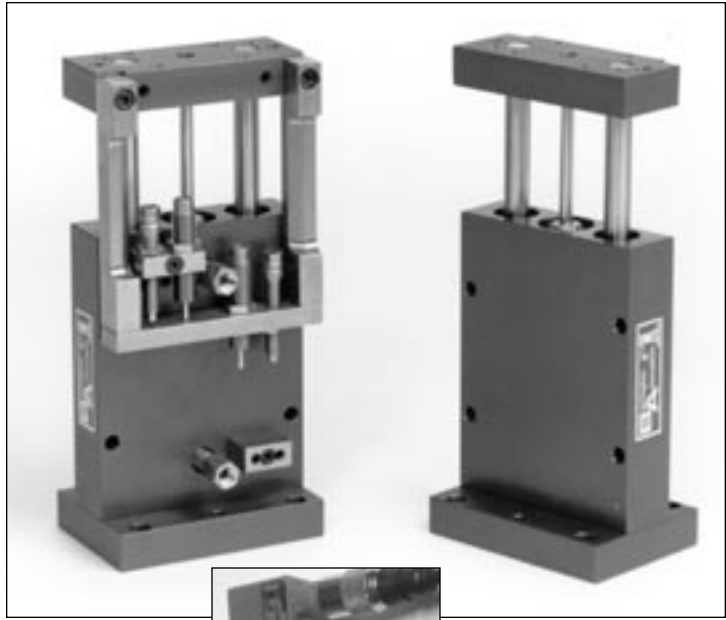
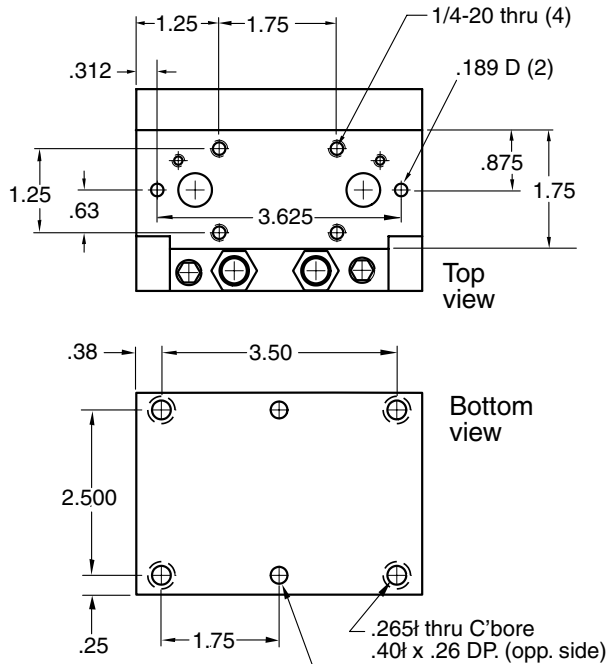


# ET-2 Elevating Table



Type	Stroke	Force @ 80psi	Weight
ET-2-2	0-2"	24 lbs	5 lbs

Technical data		
-3/4" Bore		
-Stroke designed with built in stopscrews with fine threads.	Operating medium	Compressed air or hydraulic oil
-The stopscrews can be used with sensing switches.	Operating pressure	60-100 psi
-Designed for production rates and long life.	Repeat accuracy	±0.0005 in
-Seal kits and rebuild kits available.	Air connection	1/8 NPT