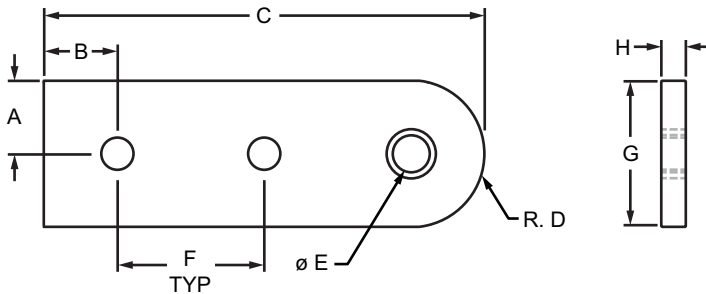


Part Description:

The standard straight dynamic pivot arm is typically used to create a dynamic pivot between profiles; it provides a long-lasting connection and requires no machining services. The pivot arm can be easily assembled, lending itself to repositioning and reuse and has a permanently lubricated bronze bushing that acts as a high-strength pivot point. The hardware to mount the pivot arm to the profile is included while the suggested hardware to connect the pivot arm to the nub can be found below. **Tip:** Pre-load your hardware prior to connecting profiles to simplify your assembly and save time.



Part No.	Series	Color	A	B	C	D	E	F	G	H	Weight
4185	10	Clear	.500"	.500"	3.000"	.505"	.373"	1.000"	1.000"	.188"	.089 lb
4185-Black	10	Black	.500"	.500"	3.000"	.505"	.373"	1.000"	1.000"	.188"	.089 lb
4385	15	Clear	.745"	.750"	4.495"	.750"	.500"	1.500"	1.490"	.250"	.254 lb
4385-Black	15	Black	.745"	.750"	4.495"	.750"	.500"	1.500"	1.490"	.250"	.254 lb
25-4185	25	Clear	12.50mm	12.50mm	75.00mm	12.50mm	10.00mm	25.00mm	25.00mm	4.00mm	.0340 kg
25-4185-Black	25	Black	12.50mm	12.50mm	75.00mm	12.50mm	10.00mm	25.00mm	25.00mm	4.00mm	.0340 kg
40-4385	40	Clear	20.00mm	20.00mm	120.00mm	20.00mm	14.00mm	40.00mm	40.00mm	6.35mm	.1177 kg
40-4385-Black	40	Black	20.00mm	20.00mm	120.00mm	20.00mm	14.00mm	40.00mm	40.00mm	6.35mm	.1177 kg

Material Specifications

Material	Alloy*	Finish
Aluminum	6105-T5	Anodize

* Or comparable

Included Hardware (Mount Arm to T-Slot)

Part No.	Series	Qty.	Bolt	T-Nut
3356	10	2	1/4-20 x 1/2" FBHSCS	Double Economy
3355	15	2	5/16-18 x 11/16" SHCS	
75-3509	25	2	M6 x 10mm BHSCS	
75-3513	40	2	M8 x 16mm BHSCS	

Suggested Hardware (Mount Arm to Nub)

Part No.	Series	Qty.	Bolt Assembly
3501	10	1	5/16 x 1/4" Shoulder Bolt & Thrust Washer
3500	15	1	3/8 x 3/8" Shoulder Bolt & Thrust Washer
25-3501	25	1	6mm x 6mm Shoulder Bolt & Thrust Washer
40-3500	40	1	10mm x 10mm Shoulder Bolt & Thrust Washer