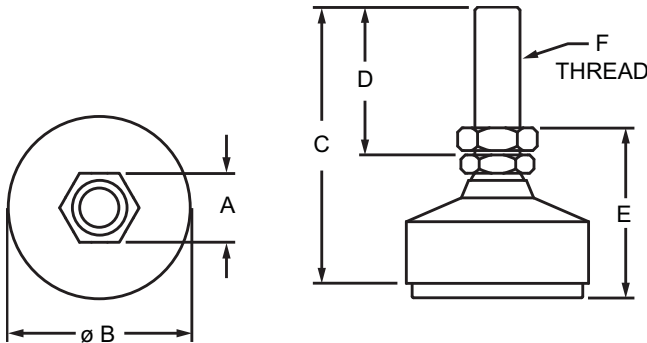


### Part Description:

The economy anti-vibration mount is a foot that pivots 20 degrees to accommodate uneven floors. It has a rubber pad to provide resistance to vibration, making it useful for high-precision projects or computerized machinery. There are options available with load capacities ranging from 200-1250 pounds and 23-148 kilograms. For information on base plates see pages 638-643 and 653-654. **Additional Information:** The economy anti-vibration mount comes with a jam nut.



Part No.	Series	Color	A	B	C	D	E	F	Load Capacity	Weight
2207	F	Yellow	.562"	1.250"	3.500"	2.000"	1.500"	3/8-16	200.00 lb	.346 lb
2208	F		.625"	1.875"	3.750"	2.000"	1.750"	1/2-13	500.00 lb	.816 lb
2209	F		1.062"	3.000"	4.125"	2.000"	2.125"	3/4-10	1250.00 lb	2.407 lb
65-2207	M		16.00mm	32.00mm	89.00mm	51.00mm	48.00mm	M10 x 1.50	23.00 kg	.1711 kg
65-2208	M		19.00mm	48.00mm	95.00mm	51.00mm	53.00mm	M12 x 1.75	54.00 kg	.3574 kg
65-2215	M		22.00mm	64.00mm	99.00mm	51.00mm	58.00mm	M16 x 2.00	100.00 kg	.6950 kg
65-2209	M		27.00mm	76.00mm	105.00mm	51.00mm	68.00mm	M20 x 2.50	148.00 kg	1.0991 kg

### Material Specifications

Material	Grade	Process	Finish
Steel	12L14	Machined	Zinc

### Required Machining Services

Machining Type	Machined	Reference Page
Tap Profile End	Mounting Profile	861

