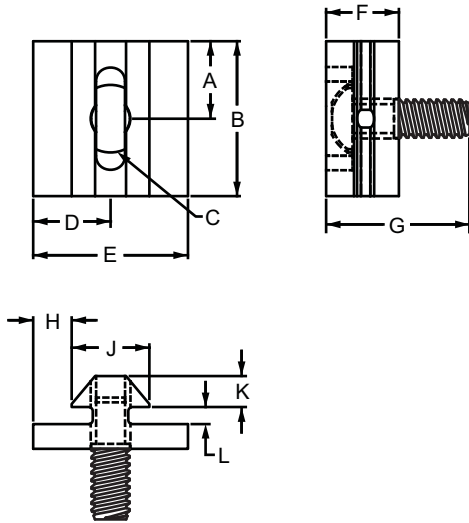


Standard Sliding Door Glide

Part Description:

The standard sliding door glide has a pad key that slides into a T-slot; it is commonly used to create a top rail sliding or bi-fold door. The standard sliding door glide bolts onto the profile end and freely rotates as the door pivots. It is made of UHMW polyethylene and requires no lubrication. A mounting screw is included. For information on machining services see page 861.



Part No.	Series	A	B	C	D	E	F	G	H	J	K	L	Weight
2059	10	.500"	1.000"	1/4-20	.500"	1.000"	.470"	.920"	.250"	.500"	.200"	.110"	.016 lb
2051	15	.750"	1.500"	5/16-18	.750"	1.500"	.700"	1.710"	.365"	.770"	.265"	.195"	.054 lb
25-2059*	25	12.70mm	25.40mm	1/4-20*	12.70mm	25.40mm	11.94mm	23.37mm	6.35mm	12.70mm	5.08mm	2.79mm	.0075 kg
40-2051**	40	19.05mm	38.10mm	5/16-18**	19.05mm	38.10mm	17.78mm	43.43mm	9.27mm	19.56mm	6.73mm	4.95mm	.0200 kg

* Important: The included 1/4-20 screw requires the corresponding metric end tap.

** Important: The included 5/16-18 screw requires the corresponding metric end tap.

Material Specifications

Material	Grade	Finish	Process
UHMW	Virgin	Natural	Extruded

Required Machining Services

Machining Type	Machined	Reference Page
End Tap	Mounting Profile	861

