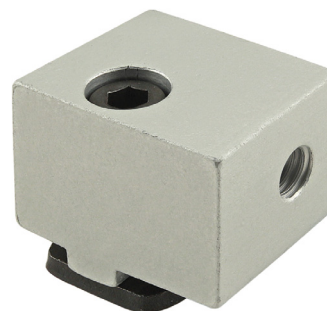
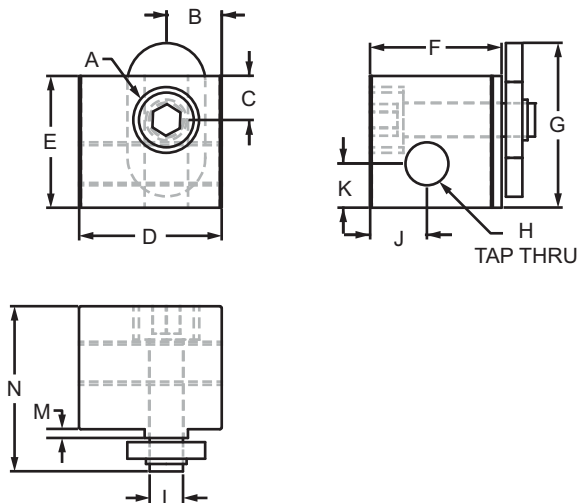


Aluminum Panel Mount Block

Part Description:

The aluminum panel mount block can be used to mount a panel flush with a profile edge or on the profile surface. There is a slot tab on the block that acts to align the mount in the T-slot. The aluminum panel mount block increases stability of the mounted panel while also reducing vibration. It is easy to use and simplifies the process of adding or removing plastic panels. The hardware to mount the block to the T-slot is included while the hardware to mount the panel to the block should be based on the panel type and thickness.



Part No.	Series	A	B	C	D	E	F	G	H	J	K	L	M	N	Weight
2427	10	.375" c-bore .190" deep with .196" thru hole	.316"	.250"	.812"	.750"	.750"	.938"	1/4-20	.325"	.250"	.247"	.050"	.940"	.051 lb
2427-Black	10	.375" c-bore .190" deep with .196" thru hole	.316"	.250"	.812"	.750"	.750"	.938"	1/4-20	.325"	.250"	.247"	.050"	.940"	.051 lb
2910	10	.345" c-bore .190" deep with .196" thru hole	.225"	.312"	.750"	.812"	.750"	.312"	1/4-20	.325"	.250"	.240"	.050"	.960"	.048 lb
2910-Black	10	.345" c-bore .190" deep with .196" thru hole	.225"	.312"	.750"	.812"	.750"	.312"	1/4-20	.325"	.250"	.240"	.050"	.960"	.048 lb
2425	15	.438" c-bore .250" deep with .257" thru hole	.495"	.263"	1.250"	1.000"	1.000"	1.393"	5/16-18	.443"	.390"	.310"	.125"	1.250"	.121 lb
2425-Black	15	.438" c-bore .250" deep with .257" thru hole	.495"	.263"	1.250"	1.000"	1.000"	1.393"	5/16-18	.443"	.390"	.310"	.125"	1.250"	.121 lb
2900	15	.406" c-bore .310" deep with .257" thru hole	.263"	.495"	1.000"	1.250"	1.000"	1.143"	5/16-18	.437"	.392"	.309"	.125"	1.310"	.121 lb
2900-Black	15	.406" c-bore .310" deep with .257" thru hole	.263"	.495"	1.000"	1.250"	1.000"	1.143"	5/16-18	.437"	.392"	.309"	.125"	1.310"	.121 lb
25-2427	25	9.75mm c-bore 5.60mm deep with 5.60mm thru hole	7.85mm	12.70mm	20.30mm	19.00mm	20.30mm	19.00mm	M6 x 1.0	9.00mm	6.50mm	6.30mm	1.30mm	25.60mm	.0231 kg
25-2427-Black	25	9.75mm c-bore 5.60mm deep with 5.60mm thru hole	7.85mm	12.70mm	20.30mm	19.00mm	20.30mm	19.00mm	M6 x 1.0	9.00mm	6.50mm	6.30mm	1.30mm	25.60mm	.0231 kg
40-2425	40	11.25mm c-bore 6.10mm deep with 6.30mm thru hole	14.15mm	7.13mm	34.30mm	26.00mm	26.30mm	33.16mm	M8 x 1.25	11.60mm	10.00mm	7.87mm	3.10mm	31.16mm	.0644 kg
40-2425-Black	40	11.25mm c-bore 6.10mm deep with 6.30mm thru hole	14.15mm	7.13mm	34.30mm	26.00mm	26.30mm	33.16mm	M8 x 1.25	11.60mm	10.00mm	7.87mm	3.10mm	31.16mm	.0644 kg

CONTINUE