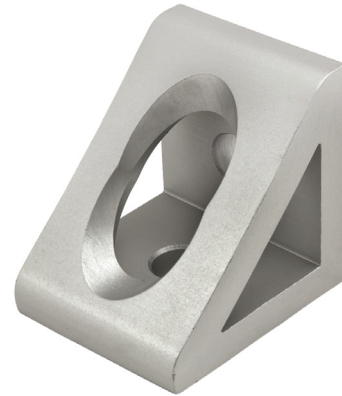
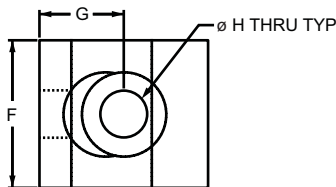
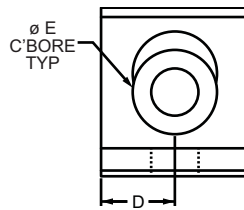
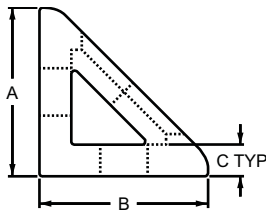


Part Description:

The 2 hole - gusseted inside corner bracket is a strong, external fastening method that creates a 90 degree connection. It requires no machining services and can provide infinite positioning along the profile T-slot, allowing a large degree of adjustability. The shape of the gusset provides extra material, strengthening the connection. It is a fastening method that can be repositioned and reused.



Part No.	Series	Material	Alloy*	Finish	A	B	C	D	E	F	G	H	Weight
4132	10	Aluminum	6105-T5	Clear Anodize	1.000"	1.000"	.188"	.438"	.500"	.875"	.500"	.281"	.035 lb
4132-Black	10			Black Anodize	1.000"	1.000"	.188"	.438"	.500"	.875"	.500"	.281"	.035 lb
4332	15			Clear Anodize	1.500"	1.500"	.250"	.656"	.750"	1.312"	.750"	.328"	.111 lb
4332-Black	15			Black Anodize	1.500"	1.500"	.250"	.656"	.750"	1.312"	.750"	.328"	.111 lb
25-4132	25			Clear Anodize	25.00mm	25.00mm	4.00mm	11.00mm	12.70mm	22.00mm	12.50mm	6.80mm	.0140 kg
25-4132-Black	25			Black Anodize	25.00mm	25.00mm	4.00mm	11.00mm	12.70mm	22.00mm	12.50mm	6.80mm	.0140 kg
30-4332	30			Clear Anodize	30.00mm	30.00mm	4.00mm	13.50mm	12.70mm	27.00mm	15.00mm	6.81mm	.0228 kg
30-4332-Black	30			Black Anodize	30.00mm	30.00mm	4.00mm	13.50mm	12.70mm	27.00mm	15.00mm	6.81mm	.0228 kg
40-4332	40			Clear Anodize	40.00mm	40.00mm	6.00mm	18.00mm	20.00mm	36.00mm	20.00mm	8.30mm	.0567 kg
40-4332-Black	40			Black Anodize	40.00mm	40.00mm	6.00mm	18.00mm	20.00mm	36.00mm	20.00mm	8.30mm	.0567 kg
45-4332	45			Clear Anodize	45.00mm	45.00mm	6.00mm	21.00mm	20.00mm	42.00mm	22.50mm	8.33mm	.0802 kg
45-4332-Black	45			Black Anodize	45.00mm	45.00mm	6.00mm	21.00mm	20.00mm	42.00mm	22.50mm	8.33mm	.0802 kg

* Or comparable

Suggested Hardware (Mount to T-Slot)

Part No.	Series	Qty.	Bolt	T-Nut
3393	10	2	1/4-20 x 1/2" BHSCS	Economy
3320	15	2	5/16-18 x 11/16" FBHSCS	Economy
75-3404	25	2	M6 x 10mm BHSCS	Economy
75-3600	30	2	M6 x 12mm BHSCS	Drop-In
75-3422	40	2	M8 x 16mm BHSCS	Economy
75-3619	45	2	M8 x 18mm BHSCS	Drop-In

