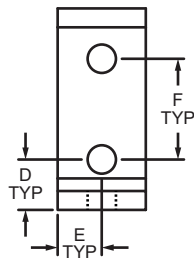
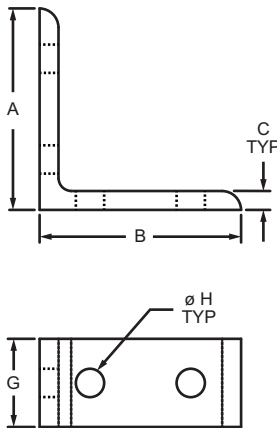




### Part Description:

The 4 hole - tall inside corner bracket is an external fastening method that creates a 90 degree connection. Each side of the bracket has two holes stacked one on top of the other. This fastener requires no machining services and can provide infinite positioning along the profile T-slot, allowing a large degree of adjustability. It is a fastening method that can be repositioned and reused.



Part No.	Series	Material	Alloy*	Finish	A	B	C	D	E	F	G	H	Weight
4115	10	Aluminum	6105-T5	Clear Anodize	2.000"	2.000"	.188"	.500"	.438"	1.000"	.875"	.281"	.053 lb
4115-Black	10			Black Anodize	2.000"	2.000"	.188"	.500"	.438"	1.000"	.875"	.281"	.053 lb
4301	15			Clear Anodize	3.000"	3.000"	.250"	.750"	.655"	1.500"	1.310"	.328"	.176 lb
4301-Black	15			Black Anodize	3.000"	3.000"	.250"	.750"	.655"	1.500"	1.310"	.328"	.176 lb
25-4115	25			Clear Anodize	50.00mm	50.00mm	4.00mm	12.50mm	11.00mm	25.00mm	22.00mm	6.80mm	.0204 kg
25-4115-Black	25			Black Anodize	50.00mm	50.00mm	4.00mm	12.50mm	11.00mm	25.00mm	22.00mm	6.80mm	.0204 kg
40-4301	40			Clear Anodize	80.00mm	80.00mm	6.00mm	20.00mm	18.00mm	40.00mm	36.00mm	8.30mm	.0853 kg
40-4301-Black	40			Black Anodize	80.00mm	80.00mm	6.00mm	20.00mm	18.00mm	40.00mm	36.00mm	8.30mm	.0853 kg
45-4301	45			Clear Anodize	90.00mm	90.00mm	6.00mm	22.50mm	21.00mm	45.00mm	42.00mm	8.33mm	.1138 kg
45-4301-Black	45			Black Anodize	90.00mm	90.00mm	6.00mm	22.50mm	21.00mm	45.00mm	42.00mm	8.33mm	.1138 kg

\* Or comparable

### Suggested Hardware (Mount to T-Slot)

Part No.	Series	Qty.	Bolt	T-Nut
3393	10	4	1/4-20 x 1/2" BHSCS	Economy
3320	15	4	5/16-18 x 11/16" FBHSCS	Economy
75-3404	25	4	M6 x 10mm BHSCS	Economy
75-3422	40	4	M8 x 16mm BHSCS	Economy
75-3619	45	4	M8 x 18mm BHSCS	Drop-In

