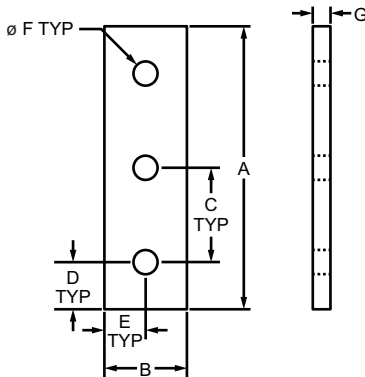


## 3 Hole - Straight Flat Plate

# 80/20<sup>®</sup> Inc.

### Part Description:

The 3 hole - straight flat plate is an external fastening method that requires no machining services. It is a durable connection that can be easily repositioned and reused. This flat plate can provide infinite positioning along the profile T-slot, allowing for a large degree of adjustability. It engages the 2-degree drop-lock feature for most profile series when the assembly bolts are tightened to the required torque, creating a strong connection. **Tip:** Use a double slide-in economy T-nut (pg. 366) to save time and money. Pre-load your hardware prior to connecting profiles to simplify your assembly.



FASTENERS

| Part No.      | Series | Material | Alloy*  | Finish        | A        | B       | C       | D       | E       | F      | G      | Weight   |
|---------------|--------|----------|---------|---------------|----------|---------|---------|---------|---------|--------|--------|----------|
| 4118          | 10     | Aluminum | 6105-T5 | Clear Anodize | 3.000"   | .875"   | 1.000"  | .500"   | .438"   | .257"  | .188"  | .044 lb  |
| 4118-Black    | 10     |          |         | Black Anodize | 3.000"   | .875"   | 1.000"  | .500"   | .438"   | .257"  | .188"  | .044 lb  |
| 4306          | 15     |          |         | Clear Anodize | 4.500"   | 1.490"  | 1.500"  | .750"   | .745"   | .328"  | .250"  | .155 lb  |
| 4306-Black    | 15     |          |         | Black Anodize | 4.500"   | 1.490"  | 1.500"  | .750"   | .745"   | .328"  | .250"  | .155 lb  |
| 20-4118       | 20     |          |         | Clear Anodize | 60.00mm  | 18.00mm | 20.00mm | 10.00mm | 9.00mm  | 5.56mm | 4.00mm | .0108 kg |
| 20-4118-Black | 20     |          |         | Black Anodize | 60.00mm  | 18.00mm | 20.00mm | 10.00mm | 9.00mm  | 5.56mm | 4.00mm | .0108 kg |
| 25-4118       | 25     |          |         | Clear Anodize | 75.00mm  | 22.00mm | 25.00mm | 12.50mm | 11.00mm | 6.30mm | 4.00mm | .0163 kg |
| 25-4118-Black | 25     |          |         | Black Anodize | 75.00mm  | 22.00mm | 25.00mm | 12.50mm | 11.00mm | 6.30mm | 4.00mm | .0163 kg |
| 30-4306       | 30     |          |         | Clear Anodize | 90.00mm  | 27.00mm | 30.00mm | 15.00mm | 13.50mm | 6.30mm | 4.00mm | .0249 kg |
| 30-4306-Black | 30     |          |         | Black Anodize | 90.00mm  | 27.00mm | 30.00mm | 15.00mm | 13.50mm | 6.30mm | 4.00mm | .0249 kg |
| 40-4306       | 40     |          |         | Clear Anodize | 120.00mm | 39.80mm | 40.00mm | 20.00mm | 19.90mm | 8.30mm | 6.00mm | .0730 kg |
| 40-4306-Black | 40     |          |         | Black Anodize | 120.00mm | 39.80mm | 40.00mm | 20.00mm | 19.90mm | 8.30mm | 6.00mm | .0730 kg |
| 45-4306       | 45     |          |         | Clear Anodize | 135.00mm | 42.00mm | 45.00mm | 22.50mm | 21.00mm | 8.30mm | 6.00mm | .0880 kg |
| 45-4306-Black | 45     |          |         | Black Anodize | 135.00mm | 42.00mm | 45.00mm | 22.50mm | 21.00mm | 8.30mm | 6.00mm | .0880 kg |

\* Or comparable

### Suggested Hardware (Mount to T-Slot)

| Part No. | Series | Qty. | Bolt                    | T-Nut   |
|----------|--------|------|-------------------------|---------|
| 3321     | 10     | 3    | 1/4-20 x 1/2" FBHSCS    | Economy |
| 3320     | 15     | 3    | 5/16-18 x 11/16" FBHSCS | Economy |
| 75-3656  | 20     | 3    | M5 x 10mm BHSCS         | Economy |
| 75-3404  | 25     | 3    | M6 x 10mm BHSCS         | Economy |
| 75-3600  | 30     | 3    | M6 x 12mm BHSCS         | Drop-in |
| 75-3422  | 40     | 3    | M8 x 16mm BHSCS         | Economy |
| 75-3619  | 45     | 3    | M8 x 18mm BHSCS         | Drop-in |

