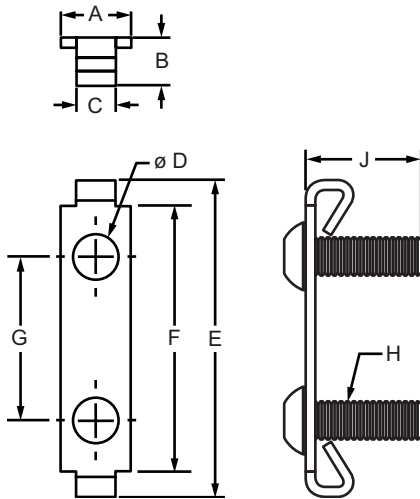


Double End Fastener

Part Description:

The double end fastener assembly is comprised of two button head socket cap screws and a double wing clip. It provides a completely hidden, fixed, 90 degree connection. The winged tabs of the clip prevent the mating profile from rotating. The double end fastener is used with larger profiles and speeds up project assembly time by replacing the need for two end fasteners. It requires an end tap service (creating two parallel through holes) on the mounting profile and two access holes in the mating profile in order to reach the screw heads. **Additional Information:** Double wing clips are available separately for instances where you want to create a custom assembly.



| Part No. | Series | Type | Material | Color | A | B | C | D | E | F | G | H | J | Weight |
|----------|--------|----------|----------|--------|-------|-------|-------|-------|--------|--------|--------|---------|--------|---------|
| 3343 | 10 | Assembly | Steel | Black | .431" | .293" | .240" | .275" | 1.937" | 1.625" | 1.000" | 1/4-20 | .750" | .040 lb |
| 3792* | 10 | Assembly | | Bright | .431" | .293" | .240" | .275" | 1.937" | 1.625" | 1.000" | 1/4-20 | .750" | .035 lb |
| 3901 | 10 | Assembly | | Bright | .431" | .293" | .240" | .275" | 1.937" | 1.625" | 1.000" | M6 | 1.000" | .034 lb |
| 3351 | 10 | Clip | | Black | .431" | .293" | .240" | .275" | 1.937" | 1.625" | 1.000" | — | — | .013 lb |
| 3794 | 10 | Clip | | Bright | .431" | .293" | .240" | .275" | 1.937" | 1.625" | 1.000" | — | — | .010 lb |
| 3344 | 15 | Assembly | | Black | .625" | .450" | .300" | .354" | 2.800" | 2.500" | 1.500" | 5/16-18 | 1.000" | .090 lb |
| 3793* | 15 | Assembly | | Bright | .625" | .450" | .300" | .354" | 2.800" | 2.500" | 1.500" | 5/16-18 | 1.000" | .091 lb |
| 3902 | 15 | Assembly | | Bright | .625" | .450" | .300" | .354" | 2.800" | 2.500" | 1.500" | M8 | .984" | .093 lb |
| 3352 | 15 | Clip | | Black | .625" | .450" | .300" | .354" | 2.800" | 2.500" | 1.500" | — | — | .040 lb |
| 3795 | 15 | Clip | | Bright | .625" | .450" | .300" | .354" | 2.800" | 2.500" | 1.500" | — | — | .040 lb |

*Part number comes with stainless steel bolts.

Double End Fastener Assembly

Required Machining Services

| Machining Type | Profile Machined | Reference Page |
|-----------------|------------------|----------------|
| Tap Profile End | Mounting Profile | 861 |
| Access Hole | Mating Profile | 863 |

