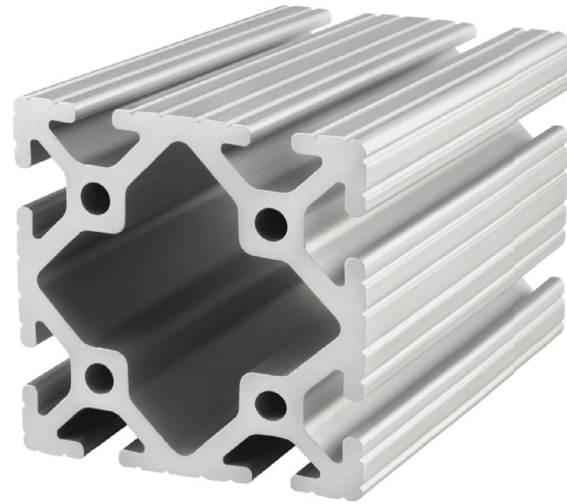
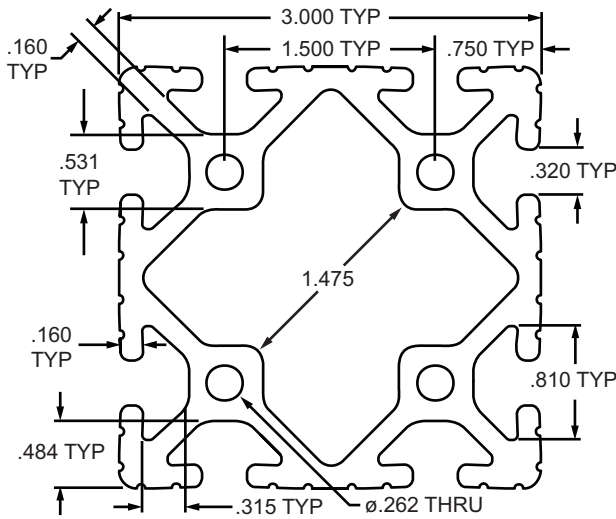


### 3030 Profile

3030 is a 3.00" x 3.00" fractional 15 series square T-slot profile with eight open T-slots, two on each 3.00" face. The profile has align-a-grooves to assist in alignment when connecting profiles. The 3030 profile is compatible with 15 series fasteners and has a center cavity that can be pressurized up to 150 psi. The eight open T-slots, strength, and ability to pressurize this profile make it a great choice for automation applications, machine frames and workstations.



Part No.	Series	Stock Length	Material	Alloy**	Finish	Drop Lock	Moment of Inertia	Surface Area	Yield Strength	Modulus of Elasticity	Weight
3030 *	15	145", 242"	Aluminum	6105-T5	Clear Anodize	2°	IX = 3.4133 <sup>in4</sup> IY = 3.4133 <sup>in4</sup>	3.212 in. <sup>2</sup>	35,000 psi	10,200,000 lb / in. <sup>2</sup>	0.3132 lb / in.
3030-Black *		145"			Black Anodize						
3030-Black-FB		per inch			Black Anodize						

\* The above profiles are sold per inch or stock length.

\*\* Or comparable

#### Standard Machining Services

Service No.	Series	Service Description	Reference Page
7030	15	Cut to Length	859
7050	15	Access Hole	863
7040	15	Anchor Counterbore	865
7055	15	Tap Profile End	861