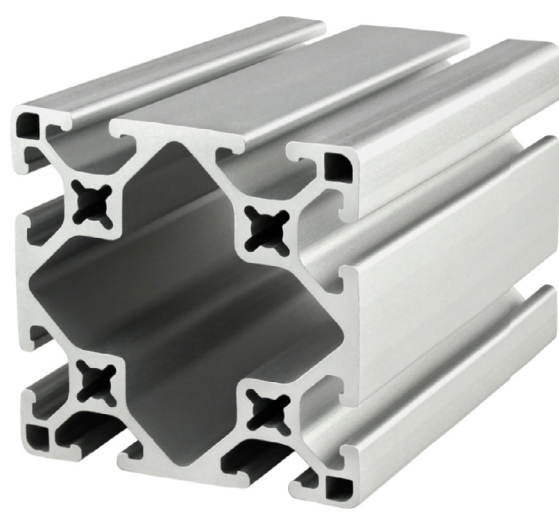
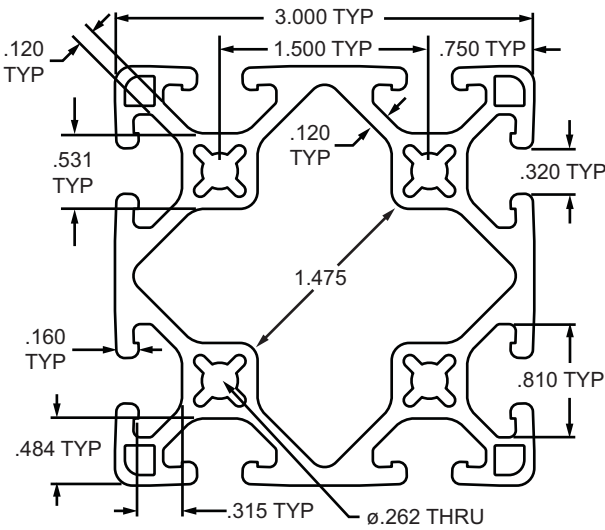


## 3.00" X 3.00" Lite Smooth T-Slotted Profile - Eight Open T-Slots

### 3030-LS Profile

3030-LS is a 3.00" x 3.00" lite fractional 15 series square T-slot profile with eight open T-slots, two on each 3.00" face. The profile is smooth, which makes it resistant to dirt and debris buildup while also being easy to clean. The 3030-LS profile is the light-duty version in the 3030 profile family, is compatible with 15 series fasteners, and has a center cavity that can be pressurized up to 150 psi. The eight open T-slots, strength, and ability to pressurize this profile make it a great choice for automation applications, machine frames and workstations.



| Part No.         | Series    | Stock Length | Material | Alloy** | Finish        | Drop Lock | Moment of Inertia                                      | Surface Area           | Yield Strength | Modulus of Elasticity            | Weight          |
|------------------|-----------|--------------|----------|---------|---------------|-----------|--|------------------------|----------------|----------------------------------|-----------------|
| 3030-LS *        | <b>15</b> | 145", 242"   | Aluminum | 6105-T5 | Clear Anodize | 2"        | IX = 2.6861 <sup>14</sup><br>IY = 2.6861 <sup>14</sup> | 2.659 in. <sup>2</sup> | 35,000 psi     | 10,200,000 lb / in. <sup>2</sup> | 0.2593 lb / in. |
| 3030-LS-Black-FB |           | per inch     |          |         | Black Anodize |           |  |                        |                |                                  |                 |

\* The above profiles are sold per inch or stock length.  
 \*\* Or comparable

### Standard Machining Services

| Service No. | Series    | Service Description | Reference Page |
|-------------|-----------|---------------------|----------------|
| 7030        | <b>15</b> | Cut to Length       | 859            |
| 7050        | <b>15</b> | Access Hole         | 863            |
| 7040        | <b>15</b> | Anchor Counterbore  | 865            |
| 7055        | <b>15</b> | Tap Profile End     | 861            |

PROFILES