



## ***Air Engineering and Supply***

2719 East Franklin Avenue, Minneapolis MN 55406

Phone: 800.332.4181 | Fax: 612.332.4184

### ***Parker Pneumatic:***

### ***Represented by Air Engineering and Supply***

Components for high performance industrial automation with proven performance for a half century.

With a track record spanning five decades, Air Engineering and Supply has the experience, training and knowledge to provide you with the best solution to your automation and system requirements.

Five State Service When And Where Your Need It. Our most valuable resource is our highly motivated people. With a total staff of 16, including 5 outside sales personnel, you can count on fast, professional attention to your most difficult and your simplest project. Air Engineering and Supply covers the Midwest including Minnesota, North and South Dakota, the Northern counties of Iowa and Western third of Wisconsin.

### ***For fast, professional service please contact us:***

Phone: 800.332.4181 Fax: 612.332.4184

[www.airengr.com](http://www.airengr.com) Email [info@airengr.com](mailto:info@airengr.com)



Interconnects with similar push button couplings



**PPM & PPL Series Couplings** are general purpose, thermoplastic couplings. The push-to-connect feature and push-button release provides simple one-handed operation. The couplers and nipples are available with or without valves. Standard seal material is Nitrile.

**Applications include:**

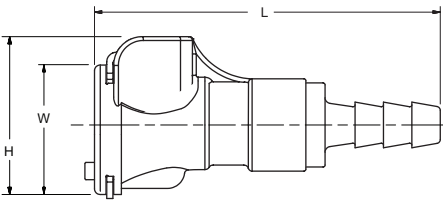


- Medical Devices
- Laboratory Equipment
- Chemical Processing
- Food and Beverage
- Industrial
- Process Equipment

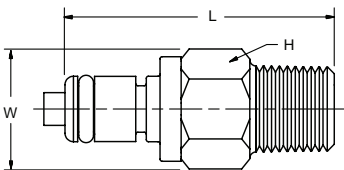




C Thermoplastics

PPM & PPL Series Specifications						
	Flow Capacity	Rated Pressure	Temperature	Material: Body	Material: Latch & Springs	O-ring
PPM Series	1/8"	Vacuum to 120 PSI	-40° F to +180° F	Acetal Copolymer	Stainless Steel	Nitrile
PPL Series	1/4"		-40° C to +82° C			

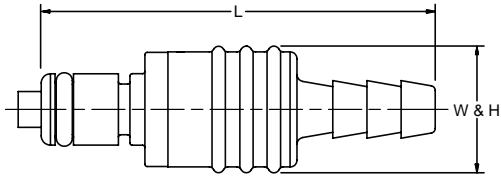
PPM & PPL Series											
Couplers - Male Thread											
			Male NPT Thread			Male BSPT Thread					
Body Size	Valved or Non-Valved	Part Number	Port End	L	W	H	Part Number	Port End	L	W	H
1/8	Valved	PPM-121-2MP	1/8" NPT	1.00	0.62	0.80	PPM-121-2MBT	1/8" BSPT	1.00	0.62	0.80
1/8	Valved	PPM-121-4MP	1/4" NPT	1.10	0.62	0.80	PPM-121-4MBT	1/4" BSPT	1.10	0.62	0.80
1/8	Non-Valved	PPM-123-2MP	1/8" NPT	1.00	0.62	0.80	PPM-123-2MBT	1/8" BSPT	1.00	0.62	0.80
1/8	Non-Valved	PPM-123-4MP	1/4" NPT	1.10	0.62	0.80	PPM-123-4MBT	1/4" BSPT	1.10	0.62	0.80
1/4	Valved	PPL-251-4MP	1/4" NPT	1.15	0.75	0.93	PPL-251-4MBT	1/4" BSPT	1.15	0.75	0.93
1/4	Valved	PPL-251-6MP	3/8" NPT	1.15	0.75	0.93	PPL-251-6MBT	3/8" BSPT	1.15	0.75	0.93
1/4	Non-Valved	PPL-253-4MP	1/4" NPT	1.15	0.75	0.93	PPL-253-4MBT	1/4" BSPT	1.15	0.75	0.93
1/4	Non-Valved	PPL-253-6MP	3/8" NPT	1.15	0.75	0.93	PPL-253-6MBT	3/8" BSPT	1.15	0.75	0.93

<b>PPM &amp; PPL Series</b>										
<b>Couplers - Hose Barb</b>										
										
				<b>Hose Barb</b>			<b>Bulkhead Hose Barb with Nut</b>			
Body Size	Valved or Non-Valved	Port End	Part Number	L	W	H	Part Number	L	W	H
1/8	Valved	1/8" Hose Barb, In-line	PPM-121-2HB	1.65	0.62	0.80	PPM-121-H2HB	1.65	0.62	0.80
1/8	Valved	3/16" Hose Barb, In-line	PPM-121-3HB	1.80	0.62	0.80	PPM-121-H3HB	1.80	0.62	0.80
1/8	Valved	1/4" Hose Barb, In-line	PPM-121-4HB	1.80	0.62	0.80	PPM-121-H4HB	1.80	0.62	0.80
1/8	Non-Valved	1/8" Hose Barb, In-line	PPM-123-2HB	1.65	0.62	0.80				
1/8	Non-Valved	3/16" Hose Barb, In-line	PPM-123-3HB	1.80	0.62	0.80				
1/8	Non-Valved	1/4" Hose Barb, In-line	PPM-123-4HB	1.80	0.62	0.80				
1/4	Valved	1/4" Hose Barb, In-line	PPL-251-4HB	1.90	0.75	0.93	PPL-251-H4HB	1.88	0.75	0.93
1/4	Valved	5/16" Hose Barb, In-line	PPL-251-5HB	1.95	0.75	0.93				
1/4	Valved	3/8" Hose Barb, In-line	PPL-251-6HB	1.90	0.75	0.93	PPL-251-H6HB	1.88	0.75	0.93
1/4	Non-Valved	1/4" Hose Barb, In-line	PPL-253-4HB	1.90	0.75	0.93				
1/4	Non-Valved	5/16" Hose Barb, In-line	PPL-253-5HB	1.95	0.75	0.93				
1/4	Non-Valved	3/8" Hose Barb, In-line	PPL-253-6HB	1.90	0.75	0.93				

<b>PPM &amp; PPL Series</b>											
<b>Nipples - Male Thread</b>											
											
				<b>Male NPT Thread</b>			<b>Male BSPT Thread</b>				
Body Size	Valved or Non-Valved	Part Number	Port End	L	W	H	Part Number	Port End	L	W	H
1/8	Valved	PPM-122-2MP	1/8" NPT	1.27	0.50	0.50	PPM-122-2MBT	1/8" BSPT	1.27	0.50	0.50
1/8	Valved	PPM-122-4MP	1/4" NPT	1.29	0.56	0.56	PPM-122-4MBT	1/4" BSPT	1.29	0.56	0.56
1/8	Non-Valved	PPM-124-2MP	1/8" NPT	1.03	0.49	0.49	PPM-124-2MBT	1/8" BSPT	1.03	0.49	0.49
1/8	Non-Valved	PPM-124-4MP	1/4" NPT	1.13	0.56	0.56	PPM-124-4MBT	1/4" BSPT	1.13	0.56	0.56
1/4	Valved	PPL-252-4MP	1/4" NPT	1.50	0.62	0.62	PPL-252-4MBT	1/4" BSPT	1.50	0.62	0.62
1/4	Valved	PPL-252-6MP	3/8" NPT	1.65	0.75	0.75	PPL-252-6MBT	3/8" BSPT	1.65	0.75	0.75
1/4	Non-Valved	PPL-254-4MP	1/4" NPT	1.26	0.62	0.62	PPL-254-4MBT	1/4" BSPT	1.26	0.62	0.62
1/4	Non-Valved	PPL-254-6MP	3/8" NPT	1.25	0.75	0.75	PPL-254-6MBT	3/8" BSPT	1.25	0.75	0.75

PPM & PPL Series

Nipples - Hose Barb



Hose Barb



Bulkhead Hose Barb with Nut

Body Size	Valved or Non-Valved	Port End	Part Number	L	W	H	Part Number	L	W	H
1/8	Valved	1/8" Hose Barb, In-line	PPM-122-2HB	0.97	0.55	0.55	PPM-122-H2HB	1.61	0.62	0.62
1/8	Valved	1/8" Hose Barb, 90°	PPM-122-C2HB	1.09	0.50	0.95				
1/8	Valved	3/16" Hose Barb, In-line	PPM-122-3HB	1.12	0.55	0.55	PPM-122-H3HB	1.76	0.62	0.62
1/8	Valved	1/4" Hose Barb, In-line	PPM-122-4HB	1.12	0.55	0.55	PPM-122-H4HB	1.76	0.62	0.62
1/8	Valved	1/4" Hose Barb, 90°	PPM-122-C4HB	1.09	0.50	1.10				
1/8	Non-Valved	1/8" Hose Barb, In-line	PPM-124-2HB	0.97	0.50	0.50				
1/8	Non-Valved	1/8" Hose Barb, 90°	PPM-124-C2HB	0.86	0.50	1.10				
1/8	Non-Valved	3/16" Hose Barb, In-line	PPM-124-3HB	1.12	0.50	0.50	PPM-124-H3HB	1.76	0.62	0.62
1/8	Non-Valved	1/4" Hose Barb, In-line	PPM-124-4HB	1.12	0.50	0.50				
1/8	Non-Valved	1/4" Hose Barb, 90°	PPM-124-C4HB	0.98	0.50	1.15				
1/4	Valved	1/4" Hose Barb, In-line	PPL-252-4HB	1.80	0.70	0.70	PPL-252-H4HB	1.87	0.74	0.74
1/4	Valved	1/4" Hose Barb, 90°	PPL-252-C4HB	1.19	0.62	1.23				
1/4	Valved	5/16" Hose Barb, In-line	PPL-252-5HB	1.85	0.70	0.70				
1/4	Valved	3/8" Hose Barb, In-line	PPL-252-6HB	1.67	0.70	0.70	PPL-252-H6HB	1.84	0.74	0.74
1/4	Valved	3/8" Hose Barb, 90°	PPL-252-C6HB	1.24	0.62	1.23				
1/4	Non-Valved	1/4" Hose Barb, In-line	PPL-254-4HB	1.25	0.62	0.62				
1/4	Non-Valved	1/4" Hose Barb, 90°	PPL-254-C4HB	1.10	0.62	1.27				
1/4	Non-Valved	5/16" Hose Barb, In-line	PPL-254-5HB	1.28	0.62	0.62				
1/4	Non-Valved	3/8" Hose Barb, In-line	PPL-254-6HB	1.25	0.62	0.62				
1/4	Non-Valved	3/8" Hose Barb, 90°	PPL-254-C6HB	1.10	0.62	1.23				